

TANAIR

AIR / OIL BOOSTER ORDERING GUIDE



● AVAILABLE STYLE

- AHS single pressure type
- AHD dual pressure type



● FEATURES

- TANAIR booster is an efficient way of generating high pressure of hydraulic fluid.
- Compact size design to save spaces and energy.
- Various applications suitable for marking, forming, punching, riveting, shearing, welding, and testing industry.

● SPECIFICATION

Model	AHS078	AHS110	AHS250	AHD078	AHD110	AHD250
Port size	3/8"	1/2"	1/2"	3/8"	1/2"	1/2"
Discharging volume (cc)	50CC	120CC	120CC	50CC	120CC	120CC
Fluid	Fitered compressed air					
Driving fluid	hydraulic oil					
Operation pressure	2~7kgf/cm2					
Max. pressure	7kgf/cm2					
Main body material	aluminum alloy					
Ambient temperature	5. c~60. c					
Mounting form	side foot type					

● HOW TO ORDER

AHS

110

Cylinder type
AHS: booster (single pressure type)

Intensified pressure ratio
078:7.8
110:11
250:25

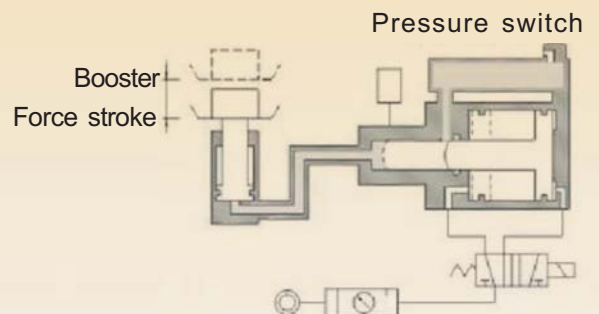


AHD: booster (double pressure type)



● SINGLE PRESSURE BOOSTER

optimum for high output, short stroke cylinder.



● THE METHOD OF CALCULATION FOR BOOSTER CONSUMPTION

$$A = (\text{Bore size})^2 \times \frac{\pi}{4} \text{ mm}^2$$

P2=intensified pressure ratio x P (Air pressure Mpa)

$$F = A \times P2 = _ N$$

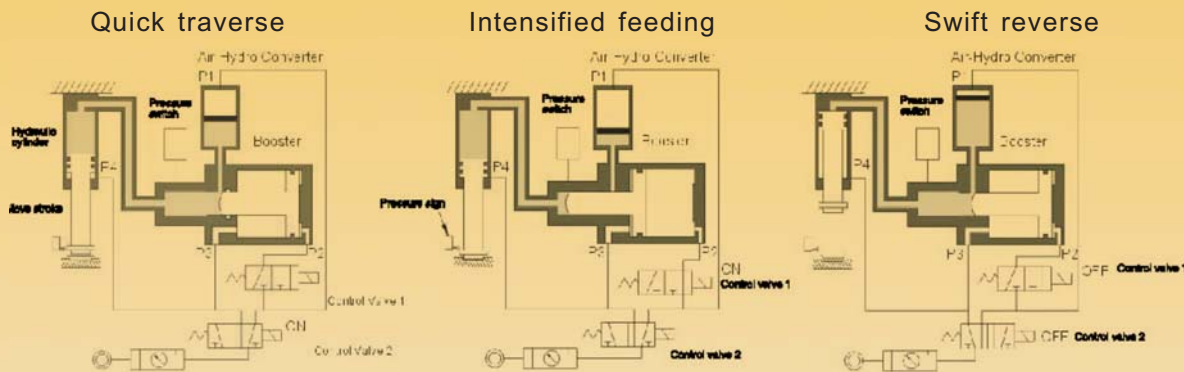
TANAIR

AIR / OIL BOOSTER SPECIFICATIONS

● POINT IN USAGE

The booster must be levelled.
 Standard booster are designed for use with petroleum base hydraulic oil.
 The booster must be higher than the work cylinder.
 Frequency of use should be 6 times/min or lower.

● OPERATING STEP FOR DUAL PRESSURE BOOSTER



When the air is charged from the port P1, the oil in the tank will forward the hydraulic cylinder quickly. The pressure is the same as the air pressure, but the inflow of oil is large in volume.

When the air is charged from the port P2, a ram will advance. The high pressured fluid will come in to the hydraulic cylinder which will be forwarded by large thrust.

When the air is send into port P4 and P3, the hydraulic cylinder is swiftly reversed and at the same time the ram goes back.

● COMPRESSED AIR CONSUMPTION

(1/cycle)

Booster	Air pressure (Mpa)					
	0.2	0.3	0.4	0.5	0.6	0.7
AHS078	2.40	3.19	3.98	4.78	5.56	6.36
AHD078	2.40	3.19	3.98	4.78	5.56	6.36
AHS110	7.58	10.07	12.57	15.07	17.57	20.06
AHD110	7.58	10.07	12.57	15.07	17.57	20.06
AHS250	18.09	24.06	30.02	35.99	41.95	47.92
AHD250	18.09	24.06	30.02	35.99	41.95	47.92

● HOW TO ORDER THE SEAL KIT

Booster	Order code
AHS078	AHSSK078
AHDV078	AHDSK078
AHS110	AHSSK110
AHD110	AHDSK110
AHS250	AHSSK250
AHD250	AHDSK250

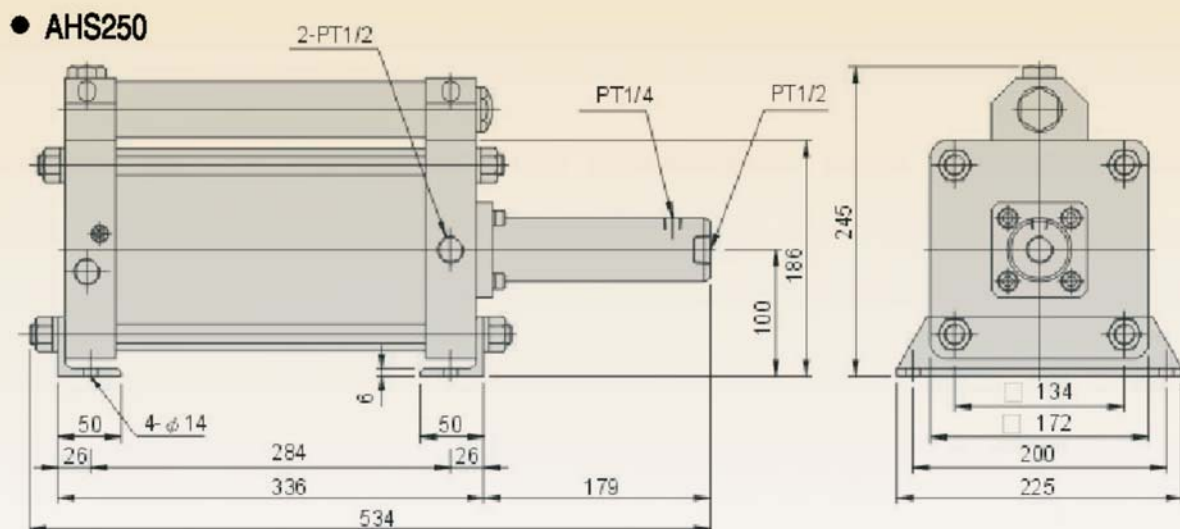
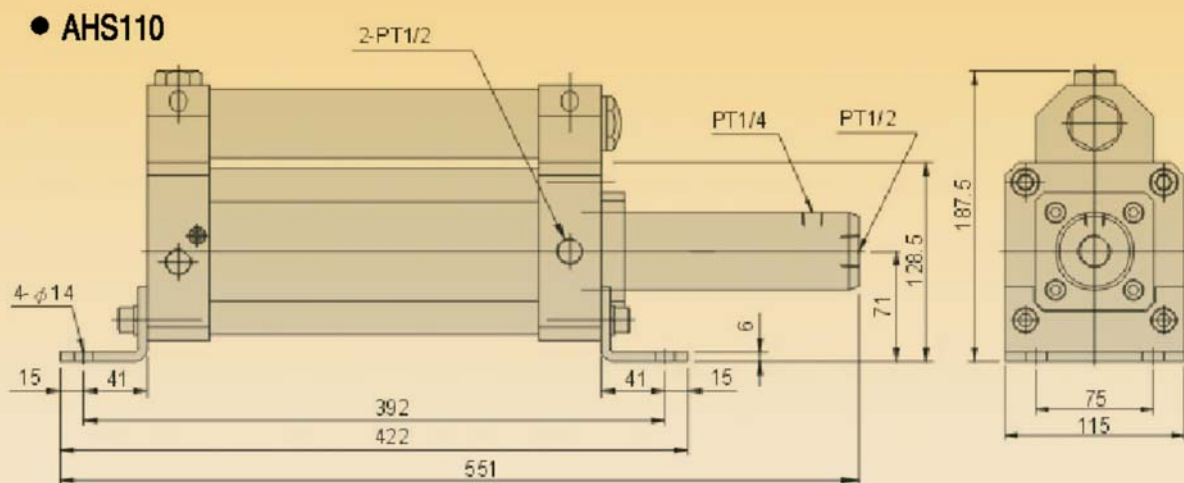
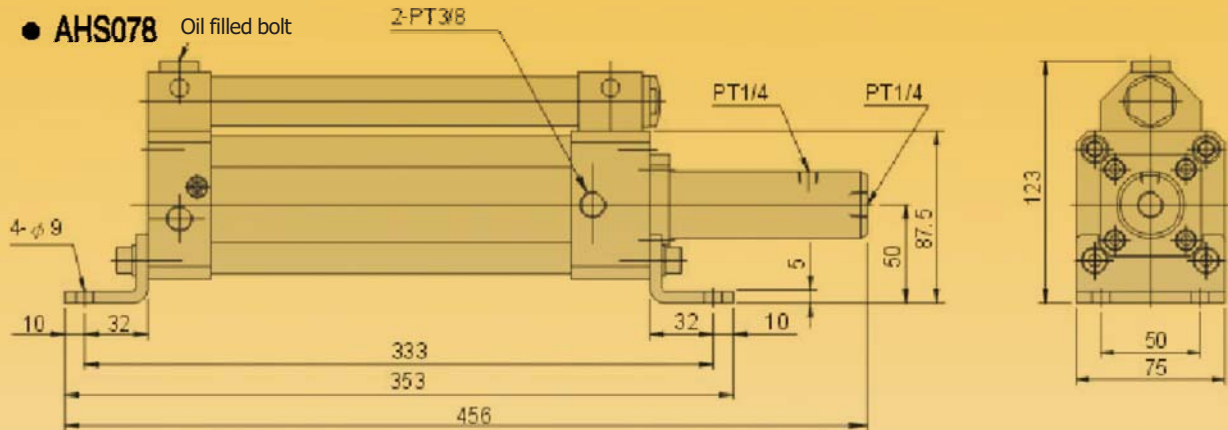
● WEIGHT

Type	AHS	AHD
	078	3.4
110	10.1	9.1
250	34.5	33.5

TANAIR

AIR / OIL BOOSTER – DIMENSIONS

● DIMENSIONS – Single pressure type

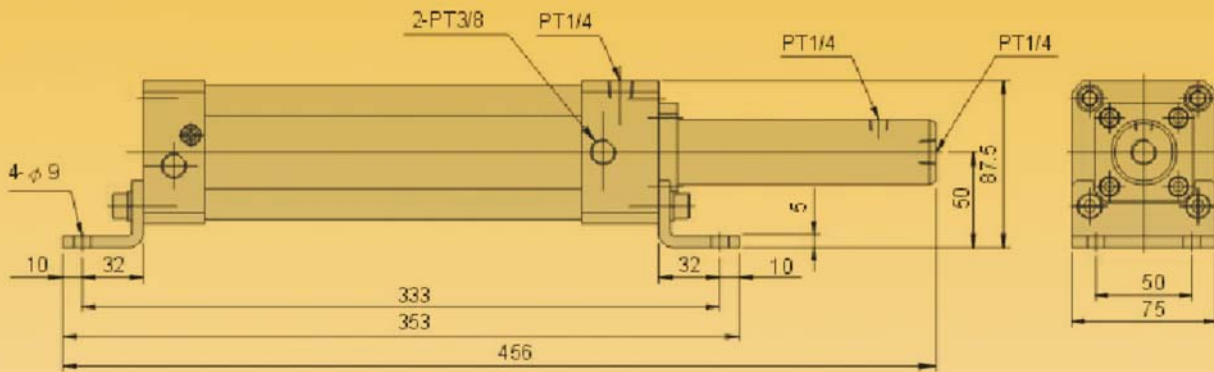


TANAIR

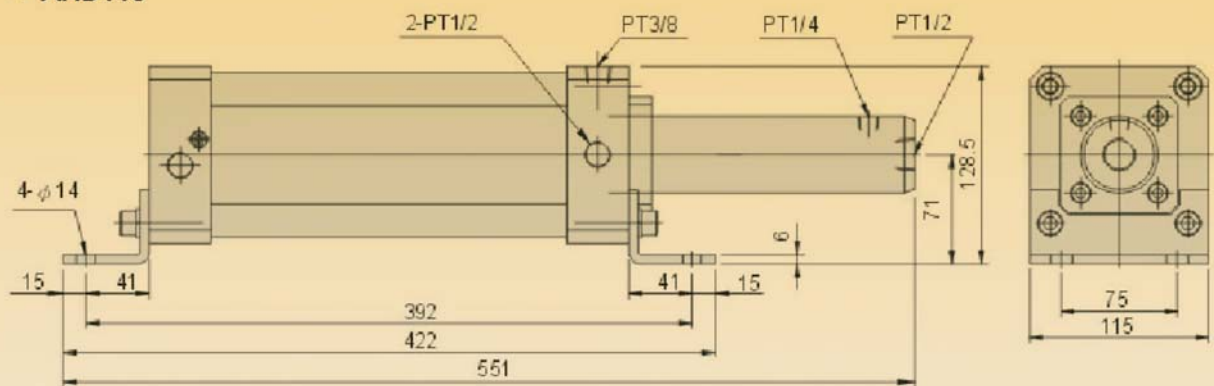
AIR / OIL BOOSTER – DIMENSIONS

● DIMENSIONS – Dual pressure type

● AHD078



● AHD110



● AHD250

