

TAN AIR

FILTER REGULATOR (EAW)

EAW2000 - 6000 Series

EAM series are compact type assemblies of a filter and a regulator.



● How to order

EAM 3000 - 03 BDG -Me

1 Filter regulator

2 Body Size

20-1/4
30-3/8
40-1/2
60-1

3 Port Size

02-Rc (PT) 1/4"
03-Rc (PT) 3/8"
04-Rc (PT) 1/2"
06-Rc (PT) 3/4"
10-Rc (PT) 1"

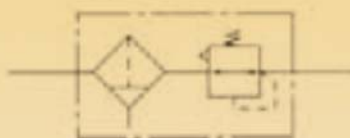
4 Accessory (Optional)

Nil -Manual Drain
B -Bracket
D -Auto Drain
G -Gauge

5 Option

Nil -PC Bowl
Me -Metal Bowl

● Symbol



● Specification

Fluid	Compressed air
Max. Supply pressure	1.5MPa (15.3kgf/cm ²)
Max. Operating pressure	0.97MPa (9.9kgf/cm ²)
Regulating range	50-850kPa (0.5-8.7kgf/cm ²)
Ambient and media temperature	5-60°C
Filtration	Standard: 10um. Option: 2, 5, 20, 40
Bowl material	Poly-carbonate, Metal
Construction	Relief type

● Precautions

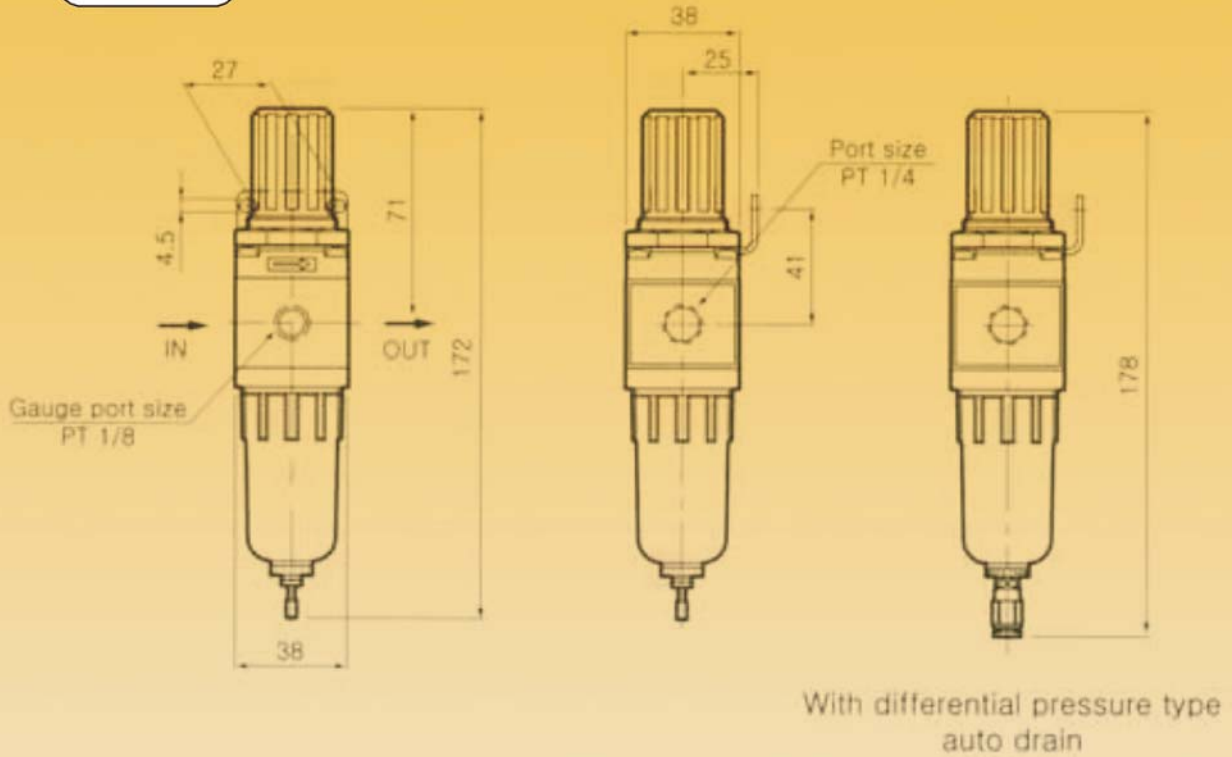
- ① Poly-carbonate bowls may be damaged and highly possible to fail if exposed to synthetic oils, thinner solvents, Trichloroethylene, kerosene, chloroform, cyclohexane or other aromatic hydrocarbons and such environment exposed chemicals such as above.
- ② When auto drain is used:
Drain piping should be both 4mm of greater in diameter and less than 1m in length.
Also should avoid setting drain piping upwards.
- ③ When auto drain is out of order. It is possible to drain manually by operating one-touch-fitting vertically.
- ④ With a drain cock attached, it can be drained when the head of liquid is shown at the glass indication tube.

TANAIR

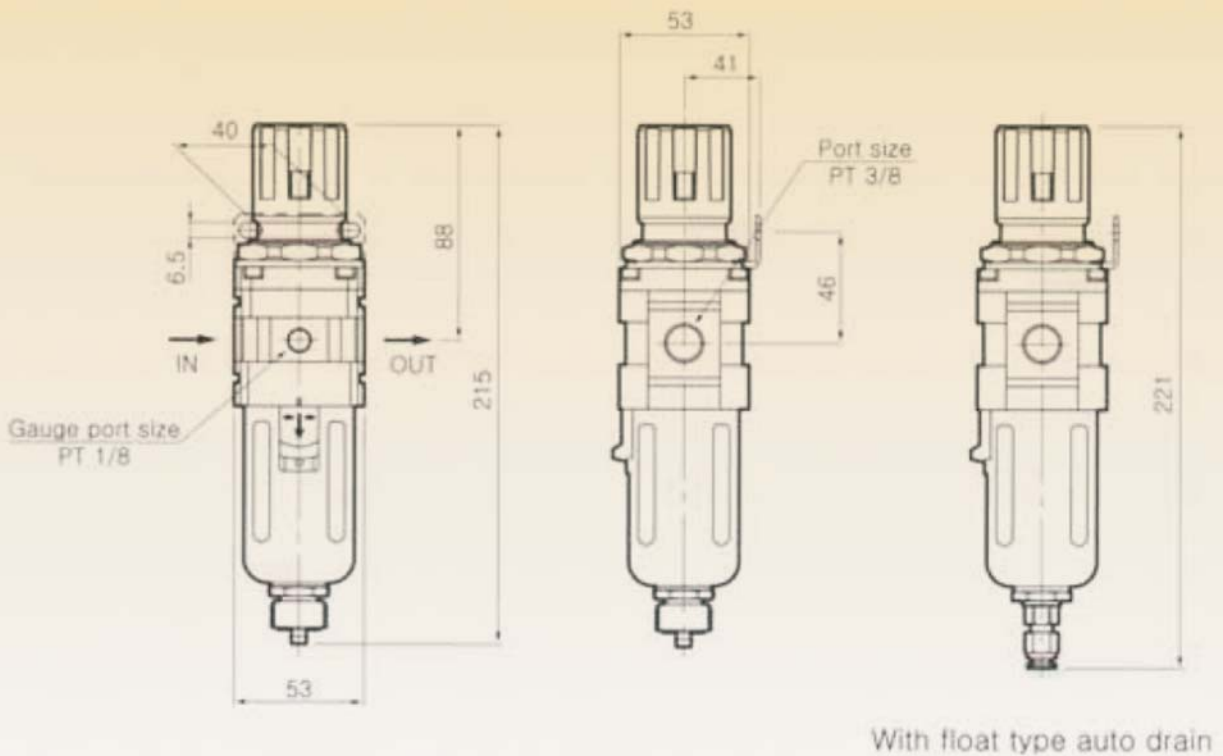
EAW Series

- DIMENSIONS (mm)

EAW 2000



EAW 3000

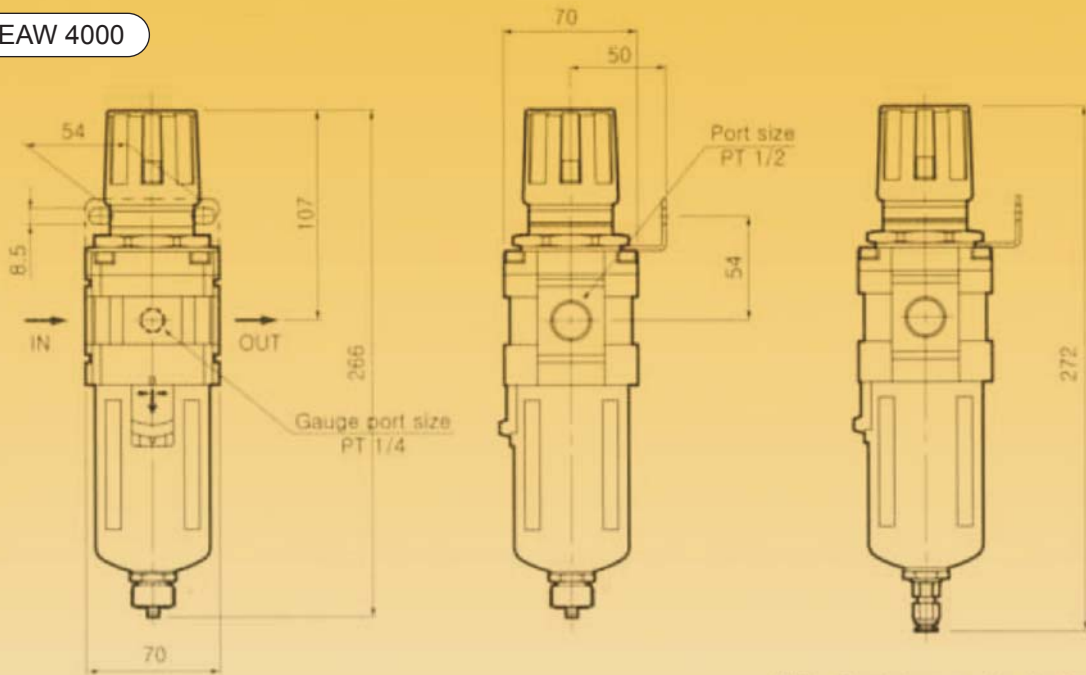


TAN AIR

EAW Series

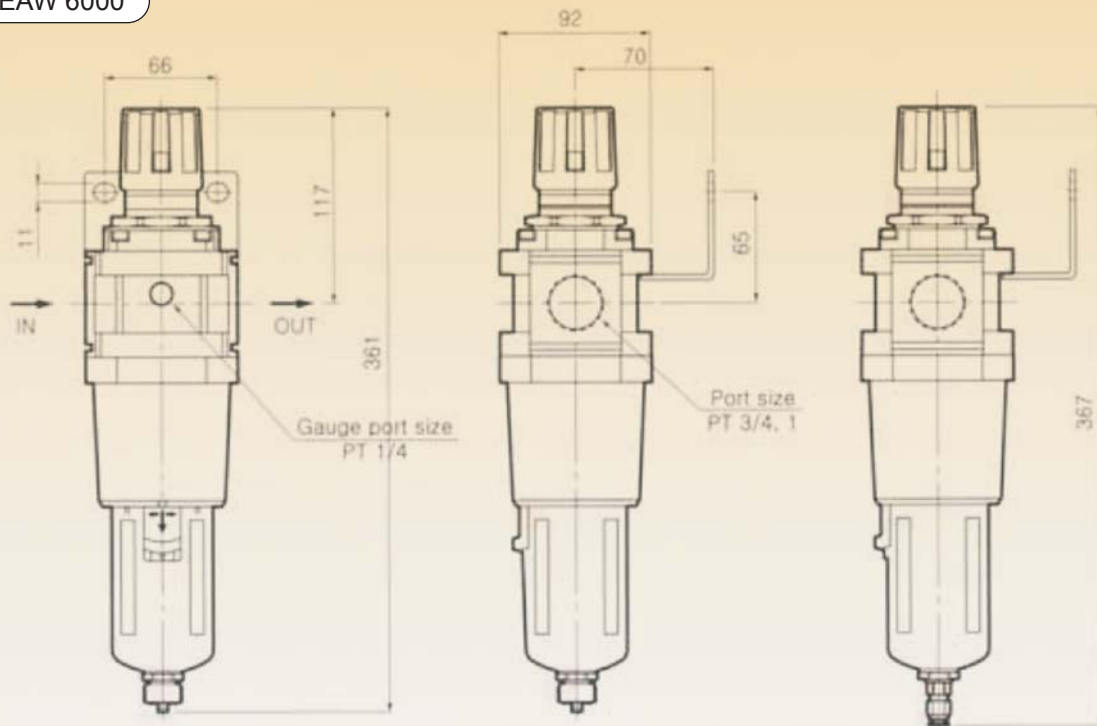
- DIMENSIONS (mm)

EAW 4000



With float type auto drain

EAW 6000



With float type auto drain