

# TANAIR PNEUMATICS

## QUICK EXHAUST VALVE ( EAQ )

### • HOW TO ORDER

**EAQ 3 000 03**

1 Quick Exhaust

2 Body Size

2 - 1/4

3 - 3/8

4 - 1/2

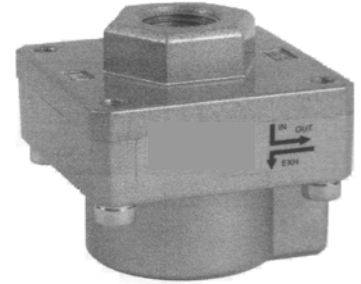
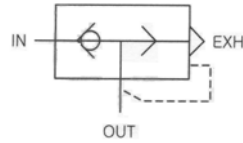
3 Port Size

02 - Rc(PT)1/4 "

03 - Rc(PT)3/8 "

04 - Rc(PT)1/2 "

### SYMBOL

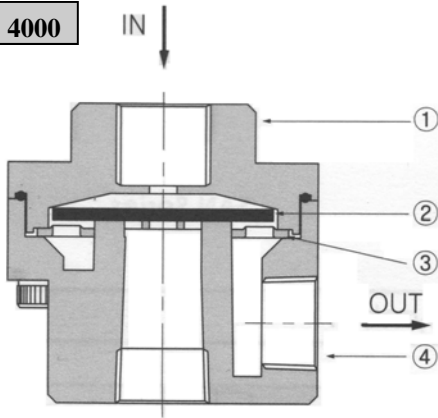


### SPECIFICATION

Fluid	Compressed Air
Max. supply pressure	1.5MPa [15.3 kgf/cm <sup>2</sup> ]
Max. operating pressure	0.97MPa [9.9 kgf/cm <sup>2</sup> ]
Ambient and media temperature	5 ~ 60℃
Weight(g)	235

### STRUCTURE / PARTS

**EAQ 4000**



No.	PARTS	MATERIAL
1	Cover	ALDC
2	Diaphragm	NBR
3	Plate	STEEL
4	Body	ALDC

### DIMENSIONS ( mm )

