

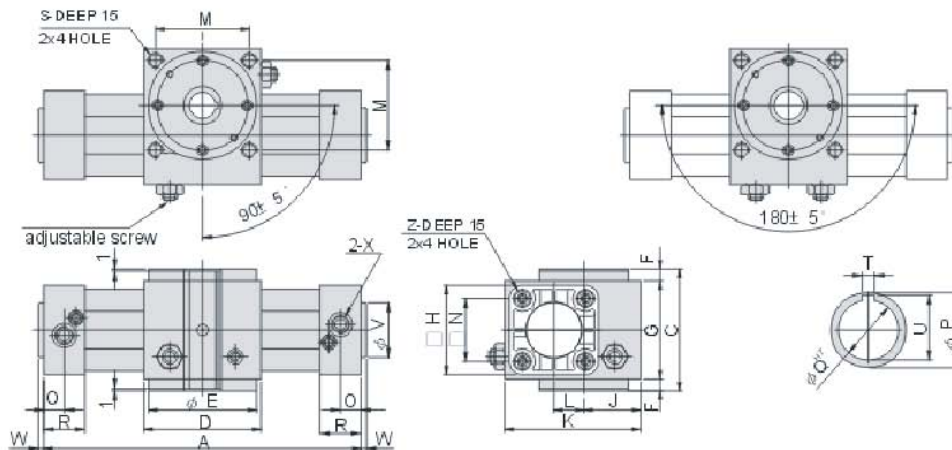
TANAIR PNEUMATICS

ROTARY UNITS DIMMENSIONS

☉→ DIMENSION-RTF

Angle of rotation 90°

Angle of rotation 180°

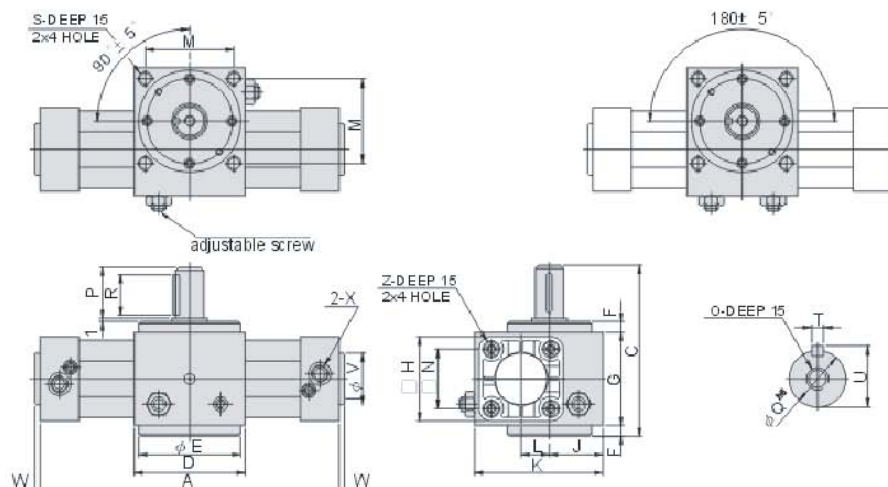


Type	A		C	D	E	F	G	H	J	K	L	M	N	O	P	Q	R	S	T	U	V	W	X	Z
	90°	180°																						
RTF40	263	326	81	75	72	8	65	53	37.5	93	27.5	60	38	15	25	14	30	M6	5	16.5	35	4	G1/4	M6
RTF63	306	377	95	90	82	10	75	75	42.5	110	30	70	56.5	16	30	19	32	M8	6	22	45	5	G3/8	M8
RTF80	343	428	119	105	96	12	95	95	51.5	135	36	82	72	19	35	24	38	M10	8	27.5	45	6	G3/8	M10

☉→ DIMENSION-RTH

Angle of rotation 90°

Angle of rotation 180°



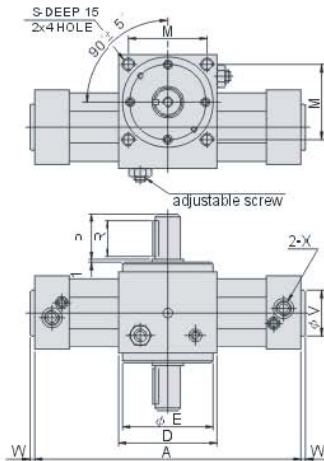
Type	A		C	D	E	F	G	H	J	K	L	M	N	O	P	Q	R	S	T	U	V	W	X	Z
	90°	180°																						
RTF40	263	326	112	75	72	8	65	53	37.5	93	27.5	60	38	M5	30	16	25	M6	5	18	35	4	G1/4	M6
RTF63	306	377	138	90	82	10	75	75	42.5	110	30	70	56.5	M8	42	24	36	M8	8	27	45	5	G3/8	M8
RTF80	343	428	170	105	96	12	95	95	51.5	135	36	82	72	M8	50	28	45	M10	8	31	45	6	G3/8	M10

TANAIR PNEUMATICS

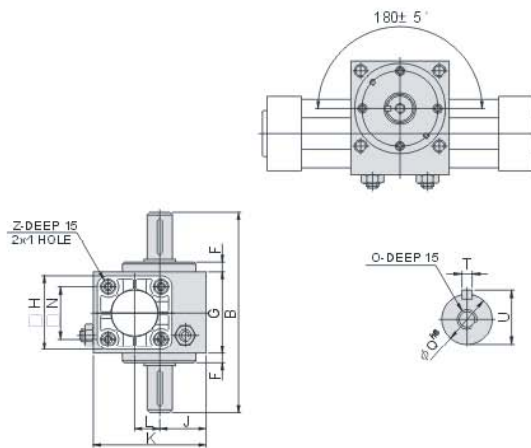
ROTARY UNITS DIMMENSIONS

☉→ DIMENSION-RTH-D

Angle of rotation 90°

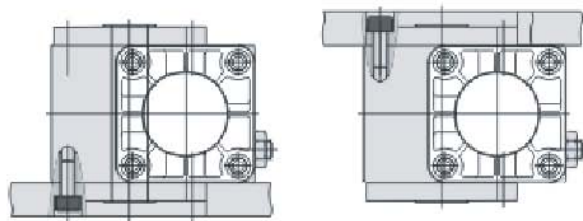


Angle of rotation 180°



Type	A		C	D	E	F	G	H	J	K	L	M	N	O	P	Q	R	S	T	U	V	W	X	Z
	90°	180°																						
RTH40-D	263	326	143	75	72	8	65	53	37.5	93	27.5	60	38	M5	30	16	25	M6	5	18	35	4	G1/4	M6
RTH63-D	306	377	181	90	82	10	75	75	42.5	110	30	70	56.5	M8	42	24	36	M8	8	27	45	5	G3/8	M8
RTH80-D	343	428	221	105	96	12	95	95	51.5	135	36	82	72	M8	50	28	45	M10	8	31	45	6	G3/8	M10

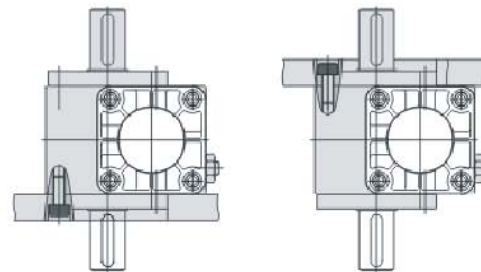
☉→ MOUNTING TYPE-RTF



Bottom mounting

Top mounting

☉→ MOUNTING TYPE-RTH. RTH-D

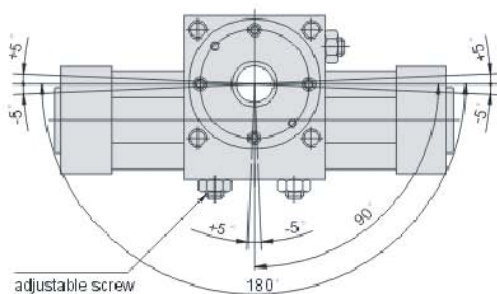


Bottom mounting

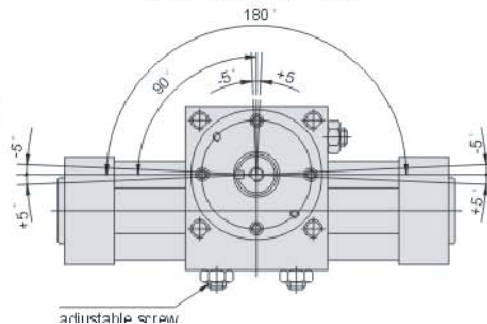
Top mounting

☉→ ROTATING DIRECTION AND ADJUSTABLE ANGLE

RTF TYPE



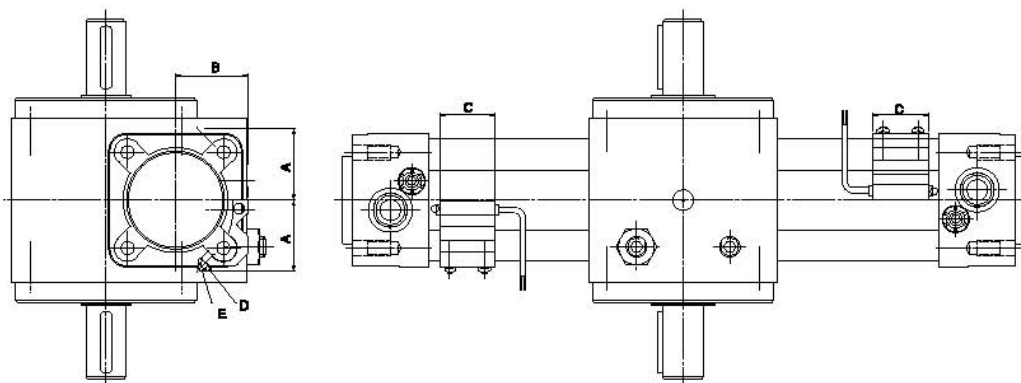
RTH RTH-D TYPE



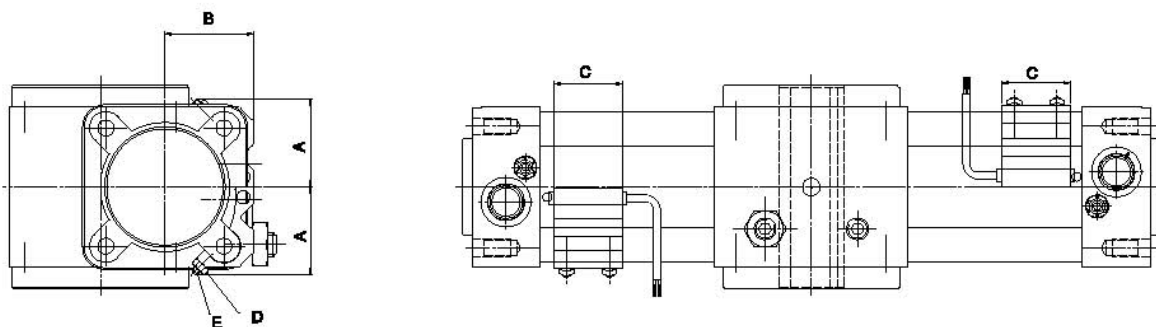
TANAIR PNEUMATICS

ROTARY UNITS DIMMENSIONS

☉→ INSTALLATION OF SENSOR SWITCHS-RTH.RTHD



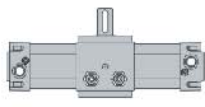
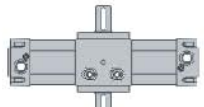
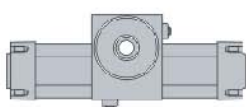
☉→ INSTALLATION OF SENSOR SWITCHS-RTF



☉→ DIMENSION FOR SENSOR MOUNTING BRACKET

Bore	A	B	C	D	E
Ø40	29	32	32	M4x8L	M4
Ø63	40	43	32	M4x10L	M4
Ø80	49.5	52	32	M4x12L	M4

☉→ WEIGHT

Bore size (Ø)	RTH		RTH-D		RTF		Sensor switch
							
	90°	180°	90°	180°	90°	180°	
40	3.00	3.10	3.05	3.15	2.84	2.94	0.065
63	5.40	5.80	5.55	5.95	5.07	5.47	0.066
80	9.75	10.30	9.99	10.54	9.19	9.74	0.066