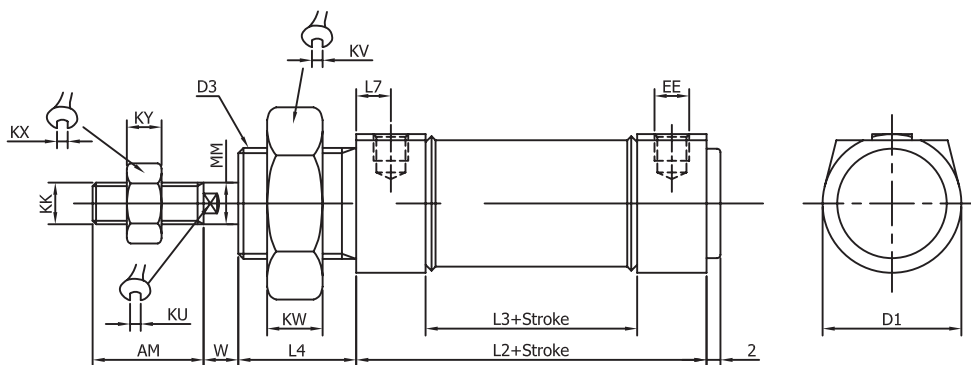


TAN AIR PNEUMATICS

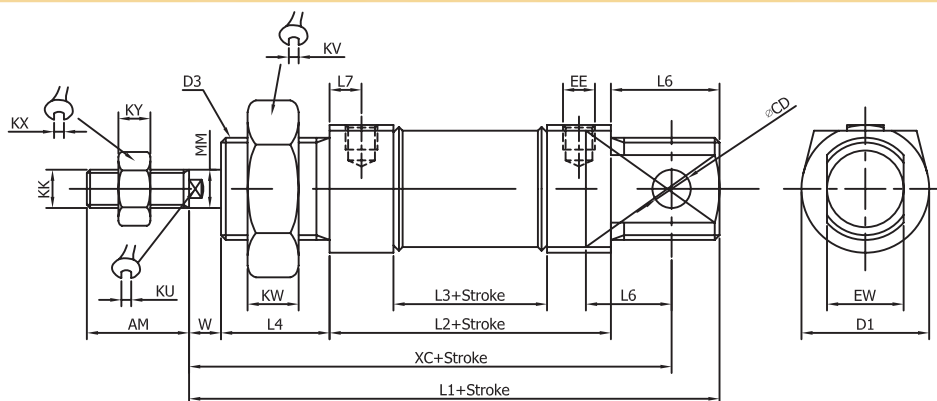
SMALL BORE ISO CYLINDERS

● DIMENSION

PCC: Boss-cut type



PC:integrated clevis type



Symbol Bore	AM	D1	Φ CD	D3	L1	L2	L3	L4	L5	L6	L7
φ 12	16	20	φ 6	M16X1.5	84	45	27	17	9	17	4.5
φ 16	16	20	φ 6	M16X1.5	81	50.5	30.5	17	9	17	5
φ 20	20	27.5	φ 8	M22X1.5	112	87.5	37	20	12	20	7.6
φ 25	22	27.5	φ 8	M22X1.5	119.5	89.5	37.5	22	12	22	8
φ 32	22	37	φ 10	M27X2	133	83.5	47.5	20	13.5	22	9
φ 40	24	45	φ 10	M33X2	138	85	48	20	13.5	22	9

- These series air cylinder applicable bore from 12–25mm are identical with ISO6432.
- With end position cushioning adjustable at both ends to absorb the impact during high-speed operation without vibration, increase operating efficiency.
- With permanent magnetic ring (as the standard)
- Cylinder cover cap are roller burnished onto the cylinder barrels so as to be pressure tight high concentricity good sealing and the cylinder provides longer life.
- With stainless steel #304 barrel material looks light and beauty never corroded and goog thermos dispersion.
- All accessories available.

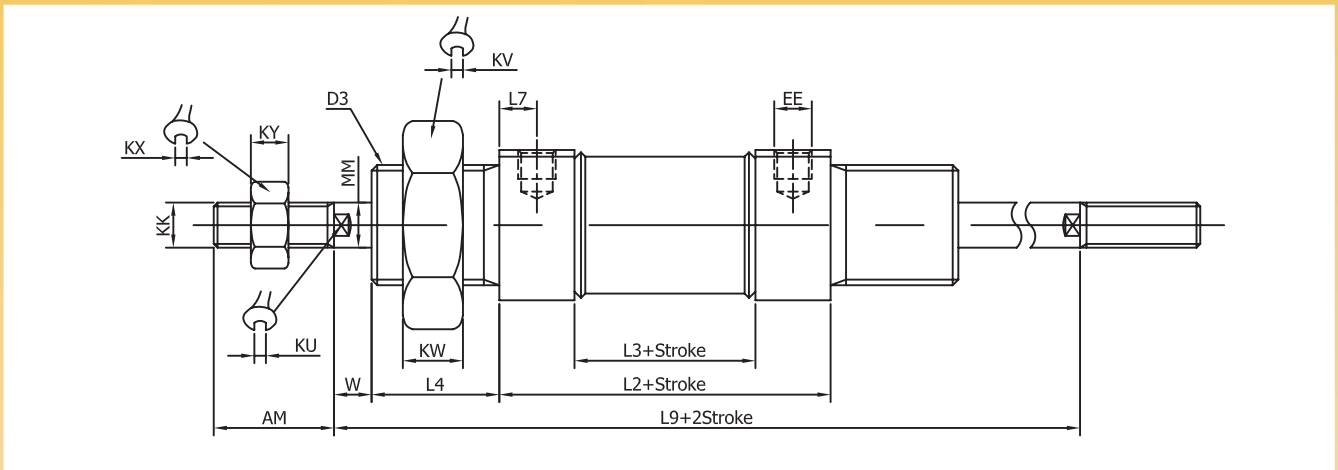
website: www.easternpneumatics.com

TAN AIR PNEUMATICS

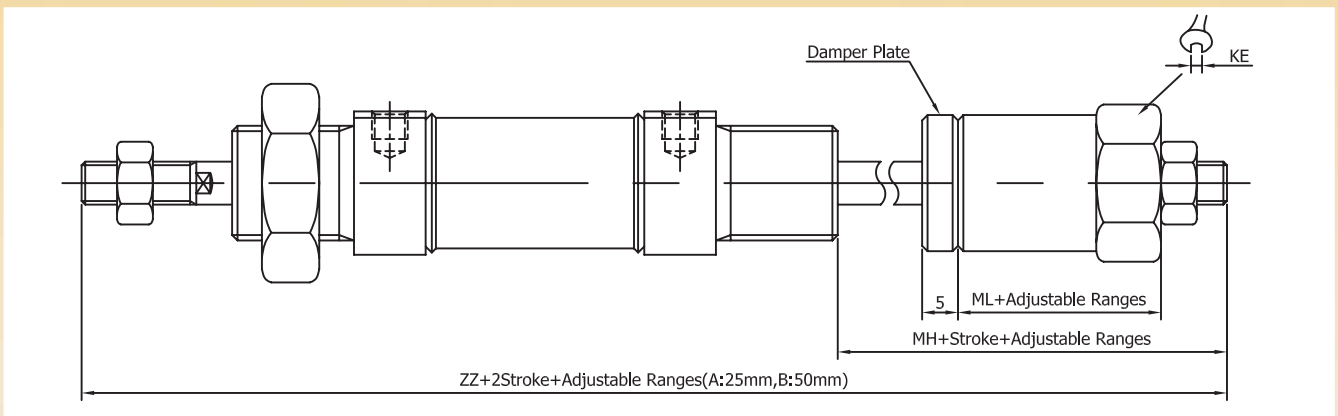
SMALL BORE ISO CYLINDERS

● DIMENSION

PCD: Double rod type



PCA, PCB: Adjustable 25mm, 50mm rod type



Symbol Bore	AM	L2	L3	L4	L7	EE	KU	KV	KW	KX	KY	MM	W	KK	L9	ZZ	MH	ML	KE
φ 20	20	67.5	37	20	7.6	G1/8	7	32	8	13	4	φ 8	4	M8X1.25	116	157	25	9	19
φ 25	22	69.5	37.5	22	8	G1/8	9	32	8	17	6	φ 10	6	M10X1.25	126	170	28	13	19
φ 32	22	83.5	47.5	20	9	G1/8	10	35	9.5	17	6	φ 12	8	M10X1.25	140	184	30	15	21
φ 40	24	85	49	20	9	G1/8	14	14	9.5	22	8	φ 16	11	M12X1.25	147	196	36	18	26

Other dimensions refer to basic type.

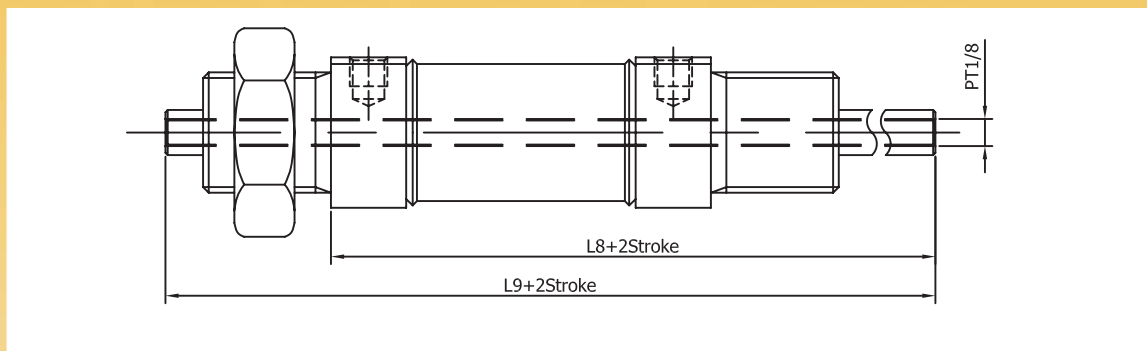
- Piston and piston rod are of whole construction
- Never loose, high concentricity, low friction
- Available for permanent magnetic ring.
- Cylinder stroke can be variably adjusted.

TAN AIR PNEUMATICS

SMALL BORE ISO CYLINDERS

● DIMENSION

●PCH: Hollow double rod type

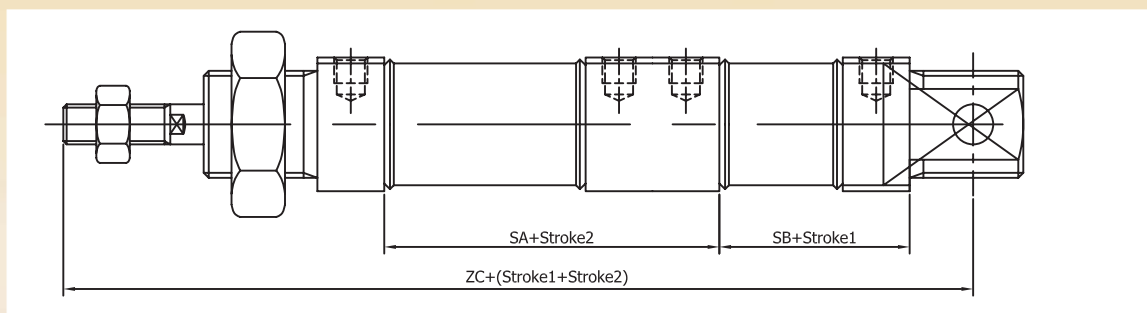


Symbol Bore size	L8	L9
25	98	126
32	112	140
40	116	147

Other dimensions refer to basic type

- Used with vacuum pad and other accessories more convenient for installation
- vacuum pad and other device could directly screw on to rod end.
- Available for permanent magnetic ring.

●PCM: dual stroke, double rod type



Symbol Bore Dia	SA	SB	ZC
25	85.5	53.5	239
32	101.5	65.5	267
40	103	67	280

Other dimensions refer to basic type

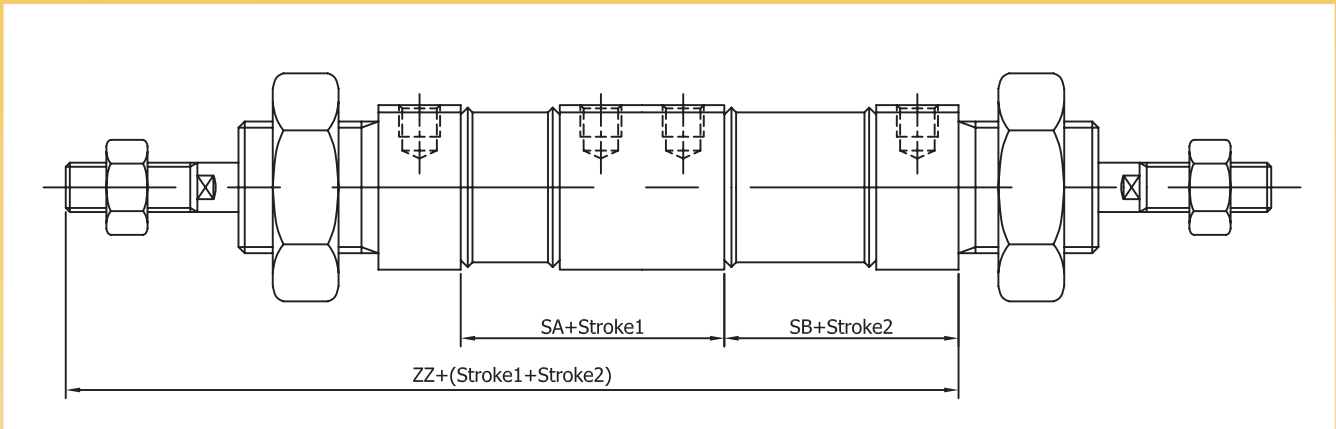
- Two cylinders are constructed as one cylinder in a deck-to-back configuration.
- Cylinder stroke to be controlled in three or four steps.
- One end of piston rod is fixed, the cylinder barrel executes the movement, the cylinder must connected with flexible line connections.
- Applicable for positioning transportation quantitative filling, right and left displacement, capable flow control, etc. for accuracy and speedy purpose.

TAN AIR PNEUMATICS

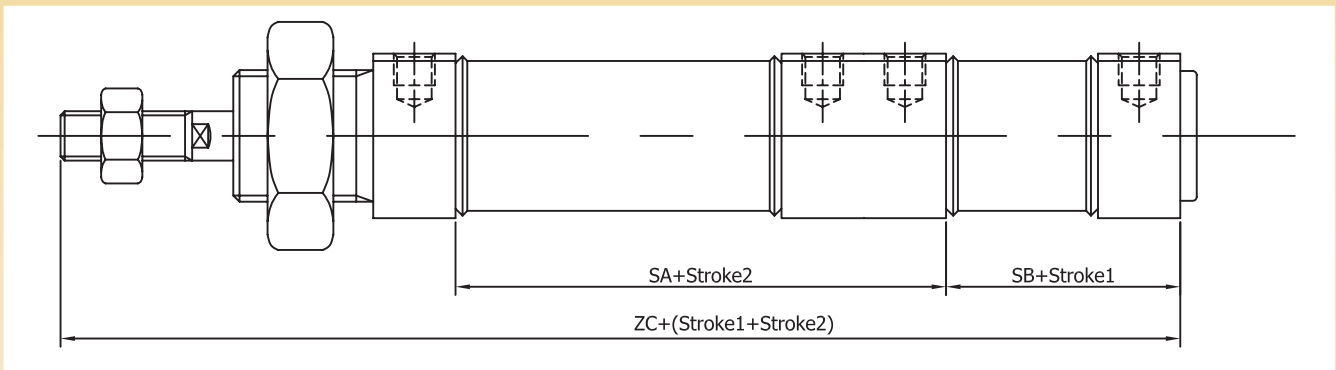
SMALL BORE ISO CYLINDERS

● DIMENSION

●PCG Dual stroke, single rod, boss-cut type



●PCF: Dual stroke, single rod type



Symbol Bore Dia	SA	SB	ZC	ZT
Φ 32	101.5	65.5	225.5	217
φ 40	103	67	234	225

Other dimensions refer to basic type

- The cylinder constructed as one cylinder in line allows double the output force.
- Cylinder stroke to be controlled in three steps.
- Applicable for position transportation, quantitative filling and flow control, right and left displacement.
- This cylinder output force in double in the out stroke.
- Available for end position cushioning adjustable at both ends.
- Available for permanent magnetic ring.

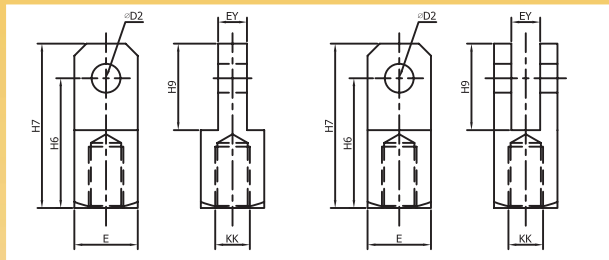
website: www.easternpneumatics.com

TAN AIR PNEUMATICS

SMALL BORE ISO CYLINDERS

● DIMENSION

- ROD end joint and accessories
- i type single knuckle joint (I)



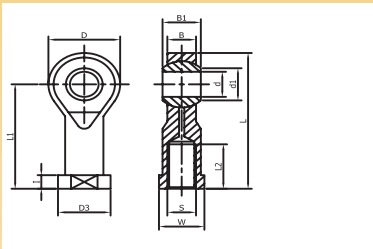
- Y type single knuckle joint (Y)

Unit (mm)

Symbol Bore size	H6	H7	H9	D2	EY	E	KK
Φ 20	35	45	25	8	8	19	M8X1.25
Φ 25	35	45	25	8	8	19	M10X1.25
Φ 32	45	57	30	10	10	22	M10X1.25
Φ 40	45	57	30	10	10	22	M12X1.25

- Rod eye clevis (P)

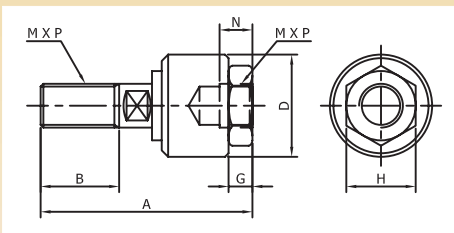
Unit (mm)



Symbol Bore size	d	D	B	B1	D1	I	W	S	L	L1	L2	L3	Dia
PHS6	6	18	6.7	9	9	5	11	M6X1	39	30	14	13	Φ 12.16
PHS8	8	22	9	12	10.4	5	14	M8X1.25	47	36	17	16	Φ 20
PHS10	10	26	10.5	14	12.9	6.5	17	M10X1.25	56	43	21	19	Φ 25.32
PHS12	12	30	12	18	15.4	6.5	19	M12X1.25	65	50	24	22	Φ 40

- Float joint (T)

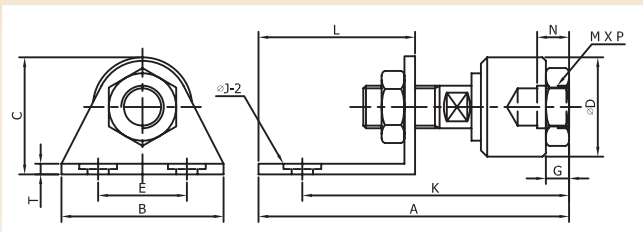
Unit (mm)



Symbol Bore size	A	B	N	ΦD	G	H	MXP
KG-1006T	37	12.5	7	18	5	10	M6X1.00
KG-1008T	50	18	8	24	7	13	M8X1.25
KG-1010T	58	20	9	28	8	17	M10X1.25
KG-1012T	58	21.5	9	28	8	17	M12X1.25

- Axial foot type floating joint (L)

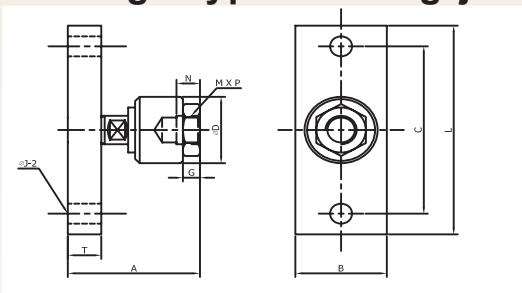
Unit (mm)



Symbol Bore size	A	B	E	T	ΦJ	C	K	MXP
KG-1008L	83	44	8	4	9	15	53	M8X1.25
KG-1010L	74	44	9	5	9	19	63	M10X1.25
KG-1012L	71	45	9	6	9	19	60	M12X1.25

- Flange type floating joint (F)

Unit (mm)



Symbol Bore size	A	B	L	ΦJ	C	T	MXP
KG-1008F	39	25	---	6.6	40	6	M8X1.25
KG-1010F	48	32	56	6.6	44	9	M10X1.25
KG-1012F	45	32	65	6.6	44	9	M12X1.25

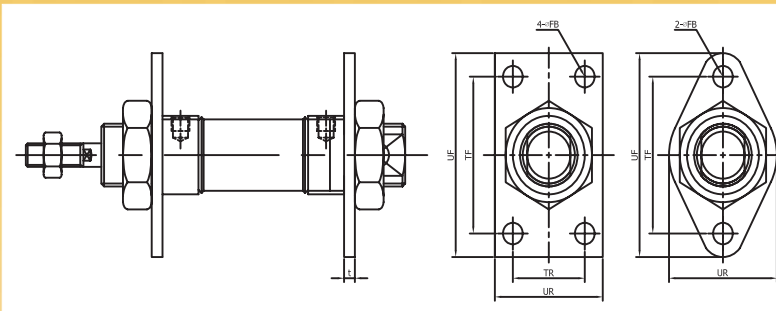
TAN AIR PNEUMATICS

SMALL BORE ISO CYLINDERS

● DIMENSION

- Mounting parts
- Flange type (FA)

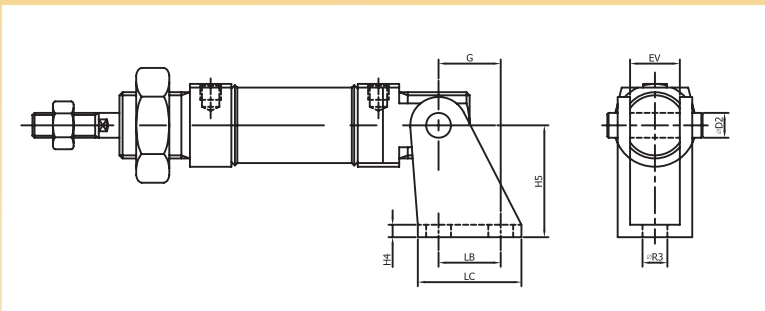
Unit (mm)



Symbol Bore Dia	TF	TR	UF	UR	t	ΦFB
Φ 12	40	---	52	30	3	5.5
Φ 16	40	---	52	30	3	5.5
Φ 20	50	---	66	40	3	6.5
Φ 25	50	---	66	40	3	6.5
Φ 32	50	26	64	40	3	7
Φ 40	54	30	74	50	4	7

● Integrated clevis type (CB)

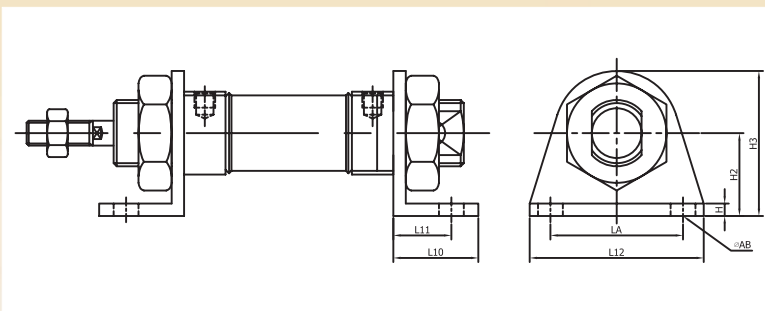
Unit (mm)



Symbol Bore Dia	LB	LC	EV	H4	H5	ΦD2	ΦR3
Φ 12	15	25	12	3	27	Φ6	Φ6
Φ 16	15	25	12	3	27	Φ6	Φ6
Φ 20	20	32	16	3	30	Φ8	Φ7
Φ 25	20	32	16	3	30	Φ8	Φ7
Φ 32	25	40	22	3	40	Φ10	Φ9
Φ 40	25	40	26	3	40	Φ10	Φ9

● Axial foot type (LB)

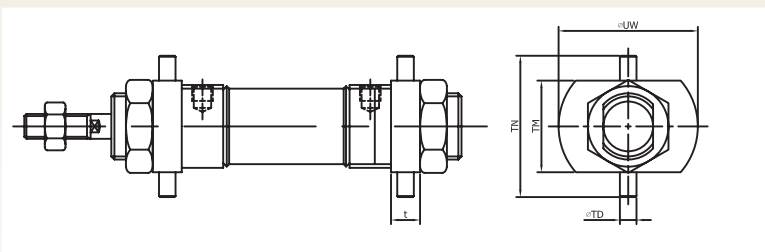
Unit (mm)



Symbol Bore Dia	L10	L11	L12	LA	H	H2	H3	LC	ΦAB
Φ 12	20.5	14	42	32	3	20	33	25	Φ6
Φ 16	20.5	14	42	32	3	20	33	25	Φ6
Φ 20	26	17	54	40	3	25	45	32	Φ7
Φ 25	26	17	54	40	3	25	45	32	Φ7
Φ 32	25	18	64	50	3.5	28	48	40	Φ7
Φ 40	30	20	74	54	4	31.5	60	40	Φ7

● Trunion type (TC)

Unit (mm)



Symbol Bore Dia	TN	TM	ΦTD	ΦUM	t
Φ 20	58	38	Φ5	Φ42	10
Φ 25	58	38	Φ8	Φ42	10
Φ 32	60	40	Φ10	Φ45	12
Φ 40	72	48	Φ10	Φ50	12