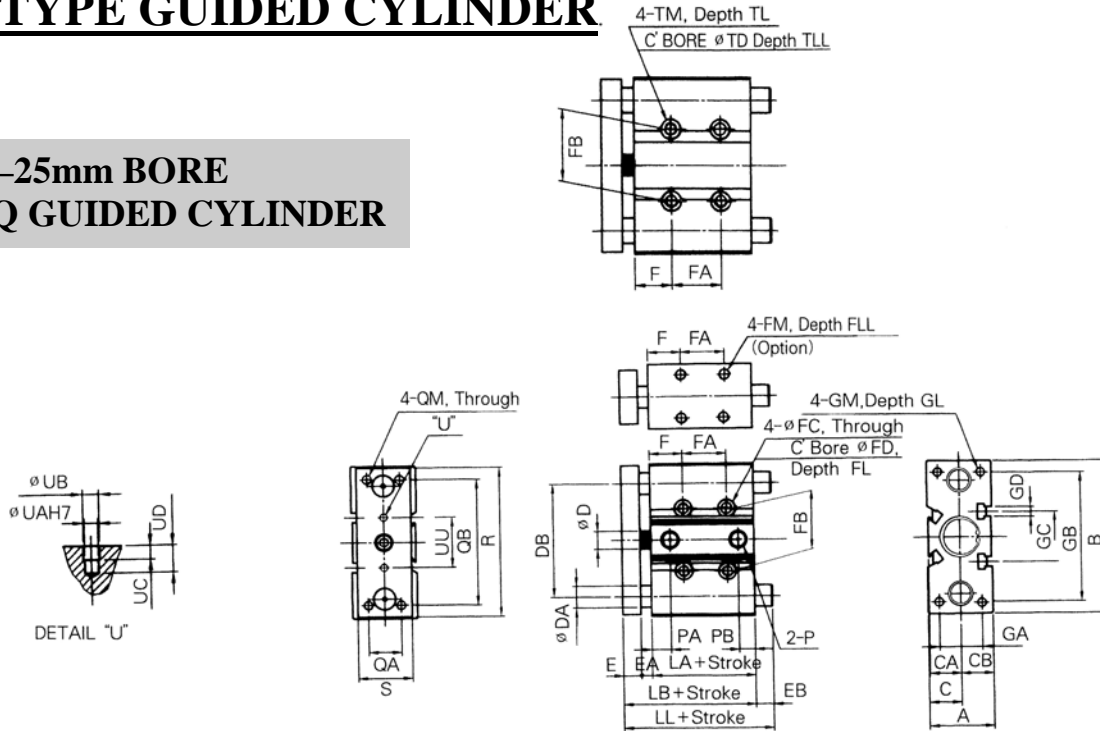


TANAIR PNEUMATICS

TPMGQ TYPE GUIDED CYLINDER

**12mm—25mm BORE
TPMGQ GUIDED CYLINDER**



※ As to intermediate stroke, spacer will be used.

TPMGQ COMMON DIMENSIONS

(Units : mm)

Bore Size (mm)	A		B		C		CA		CB		D		DA		DB	E	EA	EB					F	FA		FB	FC	FD	FL	FH	FM	FLL	GA	GB	GC	GD	GM	GL	LA	LB			
	GOM		GOL		30st less		30-50st Above		50st less		10st		20st					30st		40-50st		50st Above		30ST Less																	30ST Above		
	30st less	40st Above	30st less	30-50st Above	50st less	10st	20st	30st	40-50st	50st Above	30ST Less	30ST Above																															
ø 12	26	60	13	12.5	13	6	8	6	46	8	5	0	5	34	3	13	13	23	28	7	20	40	25	4.3	8	13.5	18	M5×0.8	12	18	50	23	M3	M4×0.7	10	29	42						
ø 16	30	67	15	14.5	15	8	10	8	50	8	5	0	5	34	5	20	20	30	35	7	24	44	27	4.3	8	12.5	22	M5×0.8	12	22	56	24	M3	M5×0.8	12	33	46						
ø 20	36	85	18	17.5	18	10	12	10	58	10	6	3	5	47	-	12	25	35	42	18	24	44	31	5.5	9.5	13.5	24	M5×0.8	13	24	72	28	M5	M5×0.8	13	37	53						
ø 25	42	95	21	20.5	21	12	16	13	68	10	6	3	5	47	-	18	18	37	48	18	24	44	35	5.5	9.5	14.5	30	M6×1.0	15	30	82	34	M5	M6×1.0	15	37.5	53.5						

Bore Size (mm)	LL					P	PA	PB	QA	QB	QM	R	S	TM	TL	TD	TLL	UU	UA	UB	UC	UD			
	TPMGQM		TPMGQL																						
	30st less	40st Above	50st less	10st	20st																		30st	40-50st	50st
ø 12	42	47	76	45	55	55	65	70	M5×0.8	11	8.5	14	48	M4×0.7	58	22	M5×0.8	10	6	4.3	23	3	3.5	3	6
ø 16	46	54	80	51	66	66	76	81	M5×0.8	11	8	16	54	M5×0.8	65	25	M5×0.8	10	6	4.3	24	3	3.5	3	6
ø 20	56	58	100	-	65	78	88	95	Rc1/8	10.5	9	18	70	M5×0.8	83	30	M6×1.0	12	7	8	28	3	3.5	3	6
ø 25	56.5	58.5	100.5	-	71.5	71.5	90.5	101.5	Rc1/8	11.5	9.5	26	78	M6×1.0	93	38	M6×1.0	12	7	8	34	4	4.5	3	6

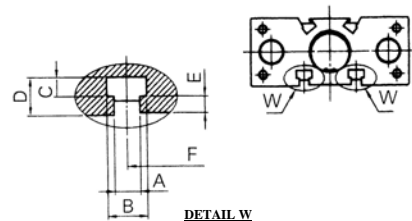
GROOVES (ø12, ø16, ø20, ø25)

These grooves(W) can be used to firmly fix the terminal boards, etc to the main body of the cylinder.

TPMGM = BUSH TYPE
TPMGL = LINEAR BEARING TYPE

(Unit : mm)

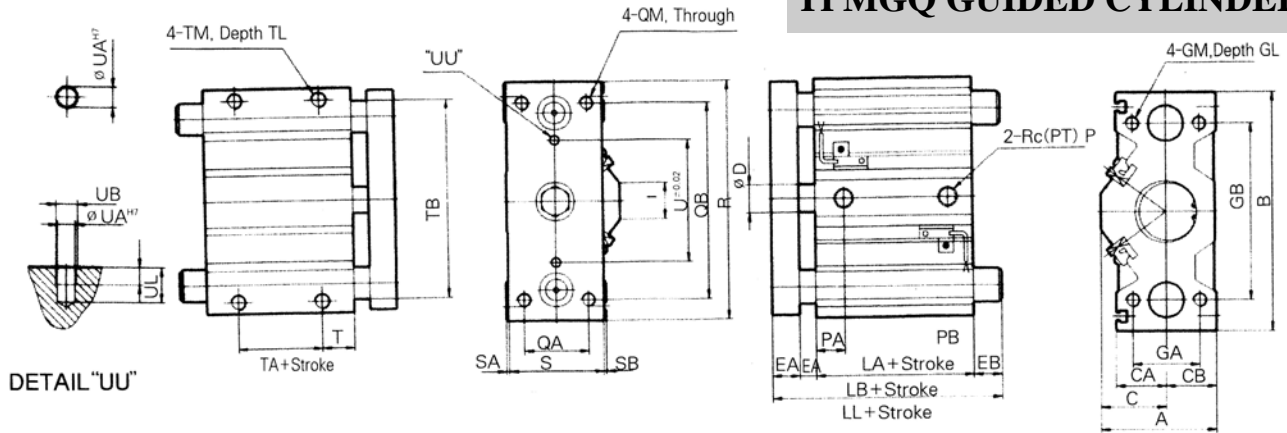
MODEL	A	B	C	D	E	F	Applicable Bolt
TPMGQ ø 12	3.5	6	2	4.3	1.5	23	M3
TPMGQ ø 16	3.7	6.2	2	4.6	1.5	2.4	M3
TPMGQ ø 20	5.5	8.5	3.5	7.8	3	2.8	M5
TPMGQ ø 25	5.5	8.5	3.5	8	3	3.4	M5



TANAI R PNEUMATICS

TPMGQ TYPE GUIDED CYLINDER

32mm—63mm BORE
TPMGQ GUIDED CYLINDER



※ As to intermediate stroke, spacer will be used.

TPMGQ COMMON DIMMENSIONS

(Unit : mm)

Bore Size (mm)	Standard Stroke (mm)	A	B	C	CA	CB	D	DA		E	EA	EB										GA	GB	GL	GM	I	LA	LB		
								GQM	GQL			TPMGQM					TPMGQL													
												25ST	50ST	75ST	100ST	125ST	150ST	25ST	50ST	75ST	100ST								125ST	150ST
∅32	25, 50	53	114	27	25	26	16	20	16	12	10	23.2	41.2	46.2	46.2	51.2	51.2	4.4	41.4	46.4	46.4	66.4	66.4	38	80	20	M8×1.25	22	37.5	59.5
∅40		57	124	31	25	26	16	20	16	12	10	16.7	34.7	39.7	39.7	44.7	44.7	0	34.9	39.9	39.9	59.9	59.9	38	90	20	M8×1.25	22	44	66
∅50	75, 100	69	140	39	29	30	20	25	20	16	12	27.7	39.7	49.7	49.7	54.7	54.7	2.9	44.9	49.9	49.9	69.9	69.9	44	100	25	M10×1.5	22	44	72
∅63	125, 150	82	150	45.5	29	36.5	20	25	20	16	12	22.7	34.7	44.7	44.7	49.7	49.7	0	39.9	44.9	44.9	64.9	64.9	44	110	25	M10×1.5	31	49	77

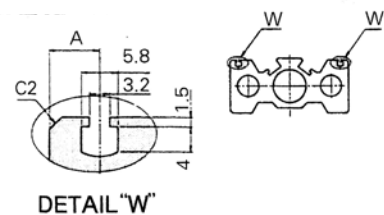
Bore Size (mm)	LL														P	PA	PB	QA	QB	QM	R	S	SA	SB	T	TA	TB	TL	TM	U	UA	UB	UC	UL
	TPMGQM							TPMGQL																										
	25ST	50ST	75ST	100ST	125ST	150ST	25ST	50ST	75ST	100ST	125ST	150ST																						
∅32	82.7	100.7	105.7	105.7	110.7	63.9	63.9	100.9	105.9	105.9	125.9	125.9	1/8	12.5	9	30	96	M8×1.25	112	48	2	1	16	5	100	11	M8×1.25	42	4	4.5	3	6		
∅40	82.7	100.7	105.7	105.7	110.7	63.9	63.9	100.9	105.9	105.9	125.9	125.9	1/8	14	10.5	30	106	M8×1.25	122	48	2	1	17	10	110	11	M8×1.25	50	4	4.5	3	6		
∅50	99.7	111.7	121.7	121.7	126.7	74.9	74.9	116.9	121.9	121.9	141.9	141.9	1/4	14	11	40	120	M10×1.5	138	56	2	1	17	10	124	12.5	M10×1.5	56	5	6	4	8		
∅63	99.7	111.7	121.7	121.7	126.7	74.9	74.9	116.9	121.9	121.9	141.9	141.9	1/4	16.5	13.5	50	130	M10×1.5	148	69	2	0	19	10	132	15	M10×1.5	66	5	6	4	8		

GROOVES (∅32, ∅40, ∅50, ∅63, ∅80, ∅100)

These grooves can be used to firmly fix the bands of lead wires of the auto switch., and also terminal boards., etc. to the main body of the cylinder.

(Unit : mm)

MODEL	A
TPCMGQ ∅ 32	8
TPCMGQ ∅ 40	8
TPCMGQ ∅ 50	8
TPCMGQ ∅ 63	8
TPCMGQ ∅ 80	10
TPCMGQ ∅ 100	10



TPMGM = BUSH TYPE
TPMGL = LINEAR BEARING TYPE