

TAN AIR PNEUMATICS

HOW TO ORDER

EPVF3

1

3

0

1

G

C

02

Option

Type Of Actuation

1	2position/single solenoid
2	2position/double solenoid
3	3position,close centre/double solenoid
4	3position,exhaust centre/double solenoid

Body Type

3	For 30 type manifold Body Ported
---	-------------------------------------

Body Option

0	Standard
3	Common exhaust for main and pilot valve

Voltage

1	110VAC 50/60HZ
2	240VAC 50/60HZ
5	24VDC

Nil	Standard type
Xc16	Copper-free

Port size(SUP.,CYL)

01	Rc(PT)1/8
02	Rc(PT)1/4

Thread

Nil	Rc(PT)
N	NPT

Manual override

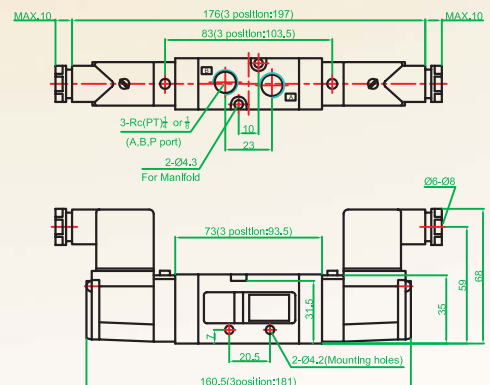
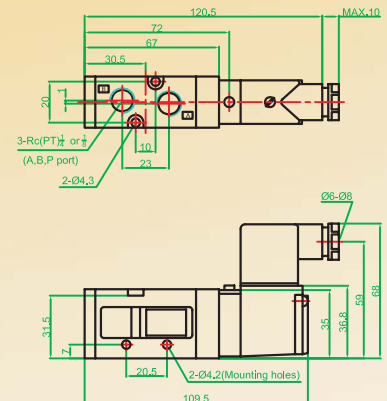
Nil	Non-locking push type
C	Knob locking type

Electrical entry/indicator light and surge voltage suppressor

G	Grommet(lead wire length300mm)
DZ	DIN connector With indicator light and surge voltage suppressor

Specification:

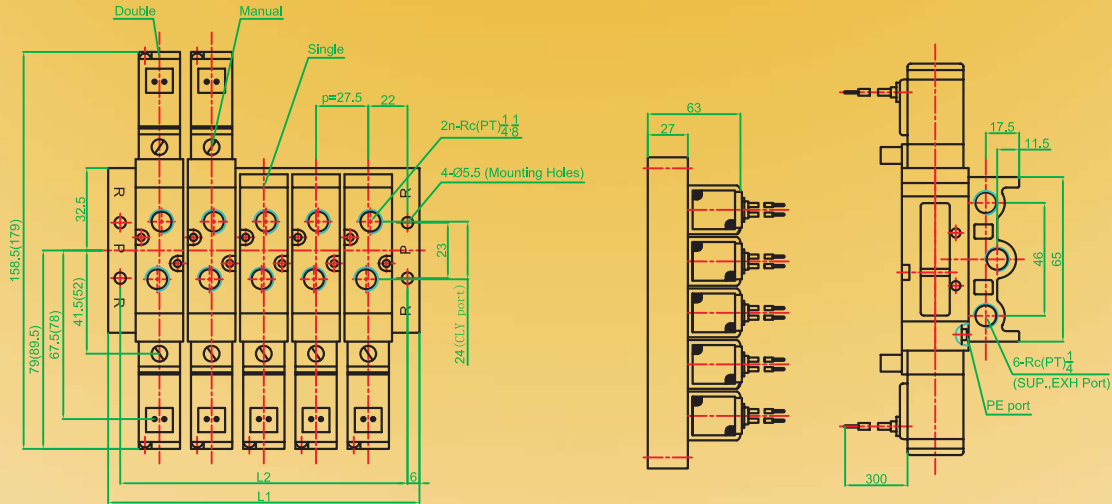
Fluid		Air	
Operating pressure range	2-position single+3-position	1.5-9kgf/cm ² (150-900kpa)	
	2-position double	1-9kgf/cm ² (100-900kpa)	
Ambient and fluid temperature		MAX.50°C	
Response time	2-position single/double	20ms or less(At 5kgf/cm ²)	
	3-position	40ms or less(At 5kgf/cm ²)	
Max operating cycle	2-position single/double	10Hz	
	3-position	3Hz	
Lubrication		Not required	
Manual override		Non-locking type, knob locking type	
Mounting position		Free	
Impact/Vibration resistance		30G/5G(8.3-2000Hz)	
Enclosure		Dust proof	
Pilot exhaust		Individual exhaust, Common exhaust for main valve or pilot valve	
Electrical entry		Grommet or DIN connector	
Voltage	AC50/60Hz	110,240	
	DC	24	
Voltage allowance		-15~+10% of rated voltage	
Power consumption	AC	Inrush	5.6VA(50Hz), 5.0VA(60Hz)
		Holding	3.4VA(50Hz), 2.3VA(60Hz)
	DC		1.8W/2W(With LED)
Indicator light	AC	LED, Varistor	
Surge voltage suppressor circuit	DC	LED, Varistor	



TAN AIR PNEUMATICS

EPVF3000/5000 VALVE MANIFOLD ORDERING GUIDE&DIMENSIONS

TO: ORDER FOR EPVF3000 VALVE
EPVV5F30-N° of Stations

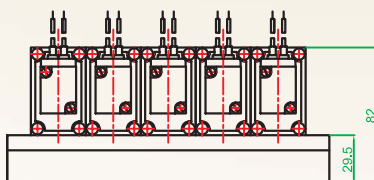
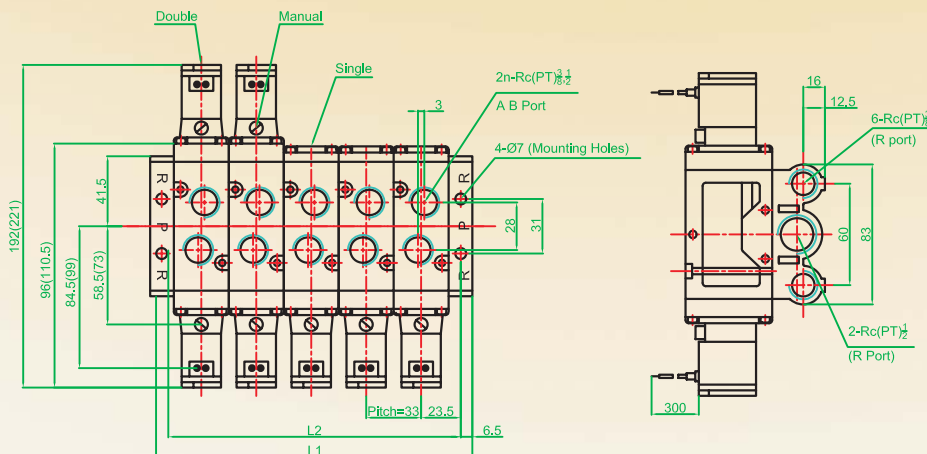


():3 position

L:Dimensions(mm),n:Stations

L \ n	2	3	4	5	6	7	8	9	10	11	12	13	14	15	16	17	18	19	20
L1	83.5	111	138.5	166	193.5	221	248.5	276	303.5	331	358.5	386	413.5	441	468.5	496	523.5	551	578.5
L2	71.5	99	126.5	152	181.5	209	236.5	264	291.5	319	346.5	374	401.5	429	456.5	484	511.5	539	566.5

TO: ORDER FOR EPVF5000 VALVE
EPVV5F50-N° of Stations



L:Dimensions(mm),n:Stations

L \ n	2	3	4	5	6	7	8	9	10
L1	93	126	159	192	225	258	291	324	357
L2	80	118	146	179	212	245	278	311	344