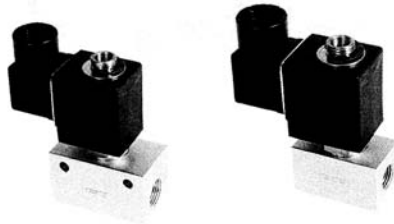
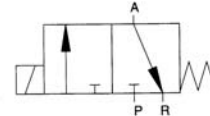


# TANAIR PNEUMATICS

## EPVT307 1/4 " 3/2 VALVE DIRECT ACTING



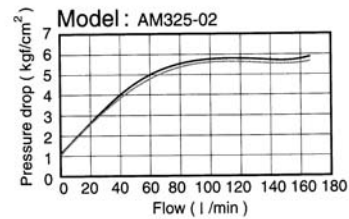
☉→SYMBOL



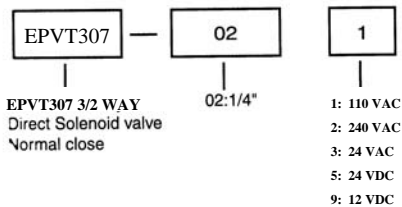
### ■ SPECIFICATION

MODEL	EPVT307
PORT SIZE	1/4"
MEDIUM	Compressed air(40 micron element for filters)
OPERATING TYPE	Inner spring return
SECTIONAL AREA	3.8mm <sup>2</sup>
LUBRICATION	None required
OPERATING PRESSURE kgf/cm <sup>2</sup>	0-6
MAX PRESSURE kgf/cm <sup>2</sup>	7.0
OPERATING TEMPERATURE -C	-10 ~ 50
DUTY CYCLE	100%
VOLTAGE RANGE	DC±10%,AC±10%
INSULATION CLASS	F
WEIGHT	270 GRAMS
DEG. OF PROTECTION	IP65(DIN 40 050)
COIL	WATER & DUST RESISTANT
STANDARD VOLTAGE	12VDC, 24VDC, 220VAC, 110VAC, 24VAC

☉→FLOW CHART



### ■ HOW TO ORDER



### ■ DIMENSIONS

