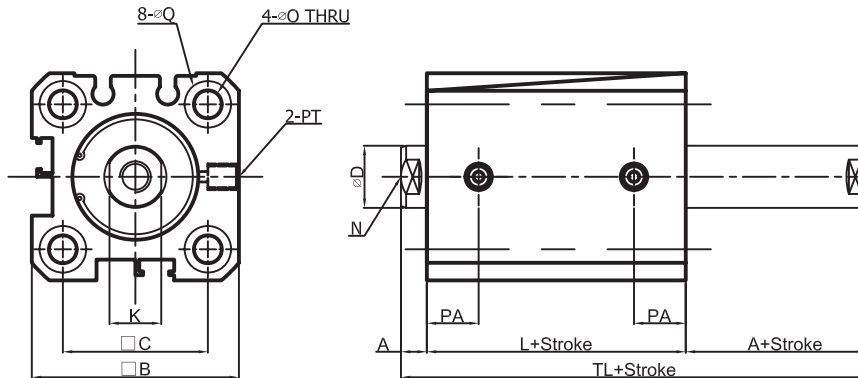


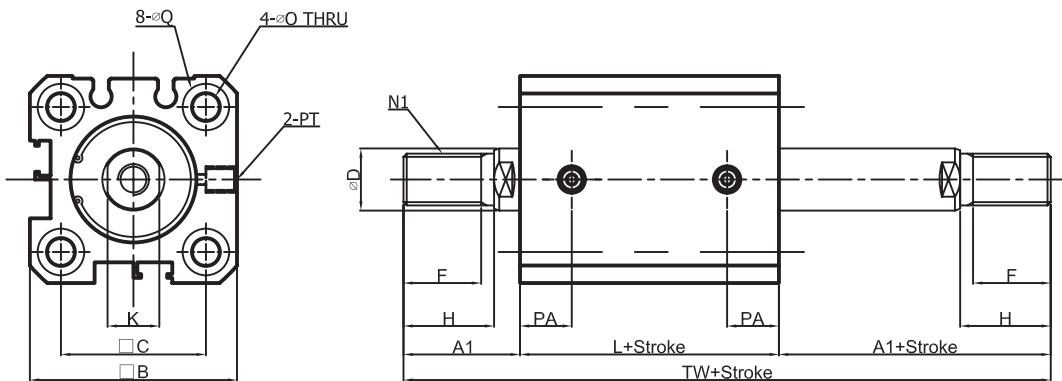
TAN AIR

TPCQ2(NON MAGNETIC) COMPACT CYLINDER DOUBLE ACTING TYPE

Female Screw: $\Phi 20$ — $\Phi 25$



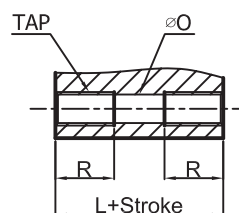
Male Screw: $\Phi 20$ — $\Phi 25$



Model	Stroke	A	A1	□B	□C	ΦD	F	H	K	L	N	N1	ΦO	PA
TPCQ2B20	5~50	4.5	18.5	36	25.5	10	12	14	8	26	M5×0.8 Dp8	M8×1.25	5.5	10.5
TPCQ2B25	5~50	5	22.5	40	28	12	15	17.5	10	29	M6×1.0 Dp12	M10×1.25	5.5	11

Model	TW	TL	PT	ΦQ
TPCQ2B20	63	35	M5×0.8	9 Dp7
TPCQ2B25	74	39	M5×0.8	9 Dp7

Both End-Tap Type

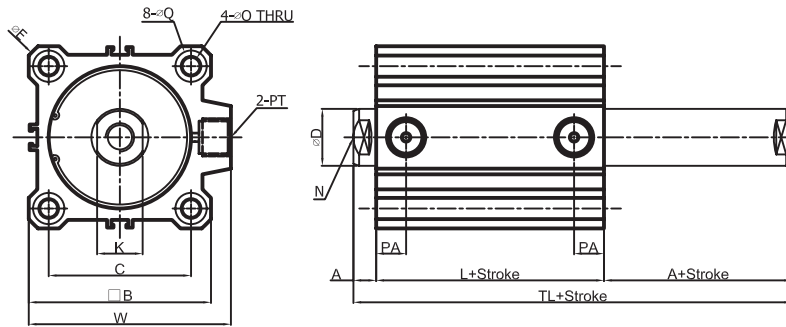


Model	TAP	R
TPCQ2B20	M6×1.0	10
TPCQ2B25	M6×1.0	10

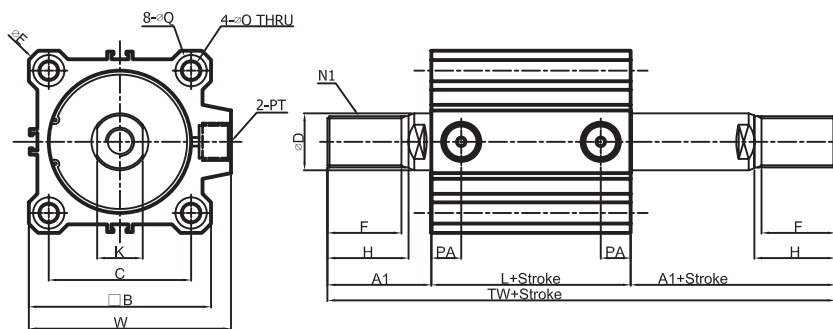
TAN AIR

TPCQ2(NON MAGNETIC) COMPACT CYLINDER DOUBLE ACTING TYPE

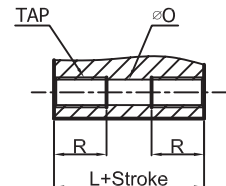
Female Screw: $\Phi 32$ — $\Phi 100$



Male Screw: $\Phi 32$ — $\Phi 100$



Both End-Tap Type



Model	TAP	R
TPCQ2B32	M6×1.0	10
TPCQ2B40	M6×1.0	10
TPCQ2B50	M8×1.25	14
TPCQ2B63	M10×1.5	18
TPCQ2B80	M12×1.75	22
TPCQ2B100	M12×1.75	22

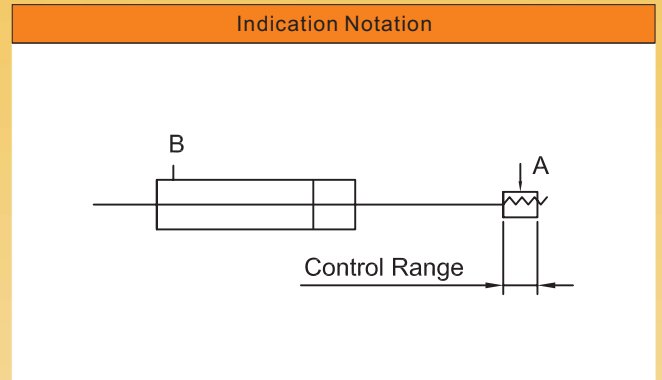
Model	Stroke	A	A1	□B	□C	ΦD	ΦE	F	H	K	L	N	N1
TPCQ2B32	5	7	28.5	45	34	16	60	20.5	23.5	14	30.5	M8×1.25 Dp13	M14×1.5
	10~100												
TPCQ2B40	5~100	7	28.5	52	40	16	69	20.5	23.5	14	40	M8×1.25 Dp13	M18×1.5
TPCQ2B50	10~100	8	33.5	64	50	20	86	26	28.5	16	40.5	M10×1.5 Dp15	M18×1.5
TPCQ2B63	10~100	8	33.5	77	60	20	103	26	28.5	16	42	M10×1.5 Dp15	M18×1.5
TPCQ2B80	10~100	10	43.5	98	77	25	132	32.5	35.5	22	51	M16×2.0 Dp21	M22×1.5
TPCQ2B100	10~100	12	43.5	117	94	30	156	32.5	35.5	27	60.5	M20×2.5 Dp27	M26×1.5

Model	ΦO	PA	TL	PT	ΦQ	W
TPCQ2B32	5.5	11.5	44.5	M5×0.8	9 Dp7	87.5
		10.5		PT1/8		
TPCQ2B40	5.5	12	54	PT1/8	9 Dp7	97
TPCQ2B50	6.8	10.5	56.5	PT1/4	11 Dp8	107.5
TPCQ2B63	9	15	58	PT1/4	14 Dp10.5	109
TPCQ2B80	11	18	71	PT3/8	17.5 Dp13.5	138
TPCQ2B100	11	23	84.5	PT3/8	17.5 Dp13.5	147.5

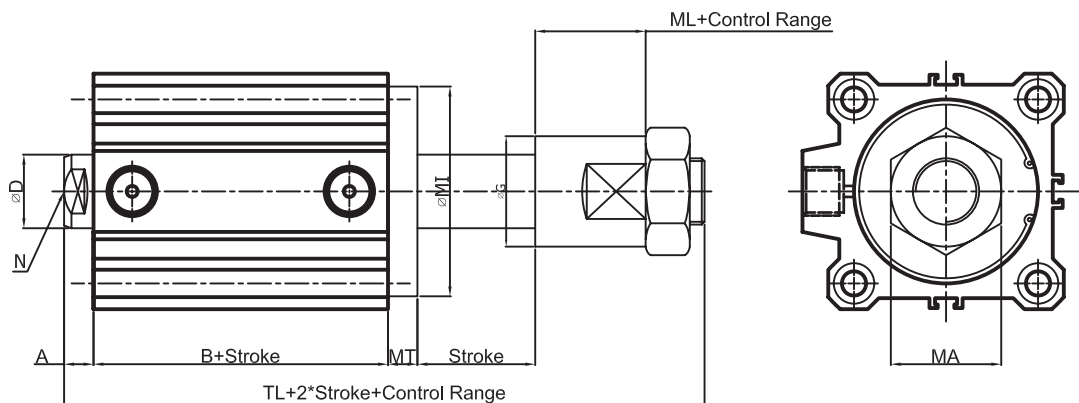
TANAIR

TPCQ2(NON MAGNETIC) COMPACT CYLINDER VARIABLE STROKE CYLINDER TYPE/CONTROL TYPE OF FORWARD MOTION SJ

Specifications	
Type	Air pressure(no oil supply) type
Inside Diameter Of Tube	Φ20, Φ25, Φ32, Φ40, Φ50, Φ63, Φ80, Φ100
Working Type	Double-Acting
Working Oil	Air
Stroke Control	Stopper Control
Range Of Stroke Control	0~50mm
Mounted Type	Hole Penetration Type
Min Set Pressure	0.5kgf/cm ²
Cushion	None



Female Screw: Φ20—Φ100



Bore	A	B	TL	MT	MI	MA	MK	ML	ΦG
20	4.5	26	61	8	□36	17	10	12.5	20
25	5	29	64.5	8	□40	17	10	12.5	20
32	7	30.5	72.5	6	Φ38	24	14	16	27
40	7	40	82	6	Φ46	24	14	16	27
50	8	40.5	91.5	8	Φ57	30	16	20	35
63	8	42	95	10	Φ68	30	16	20	35
80	10	51	119	12	Φ90	41	20	28	48
100	12	60.5	134.5	14	Φ100	41	20	28	48