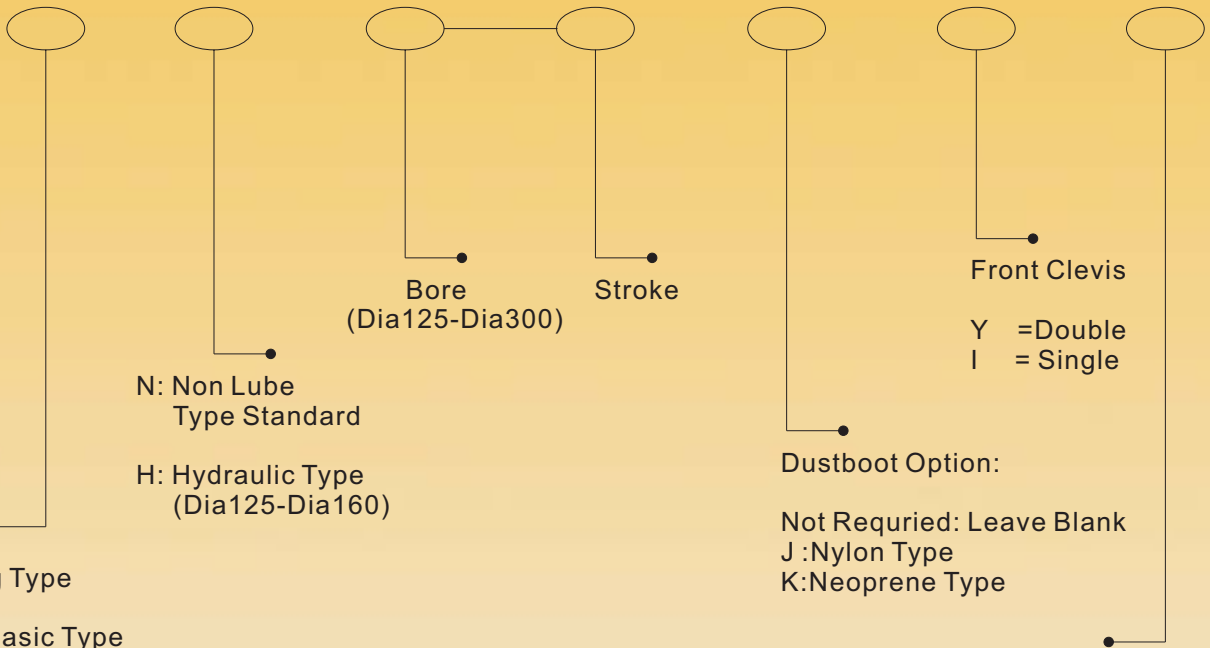


TANAIR PNEUMATICS

TPCS1 J.I.S TYPE CYLINDER PARTS ORDERING GUIDE

HOW TO ORDER

TPCS1

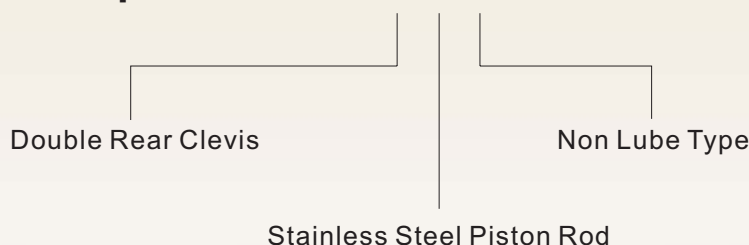


Mounting Type

- B: Basic Type
- L: Foot Mount
- F: Front Flange
- G: Rear Flange
- C: Single Rear Clevis
- D: Double Rear Clevis
- T: Trunnion
- *W: Through Rod Cylinder
- S: Stainless Steel Rod
- *TW: Multiple-End Stroke
Double End-Rod Type
- *TS: Multiple-End Stroke
Single-Rod Type
- *SJ: Variable Stroke Type/Control Type

● If You Require Mounts As Well As Stainless Steel Piston Rod , See Below:

Example: TPCS1 D S N



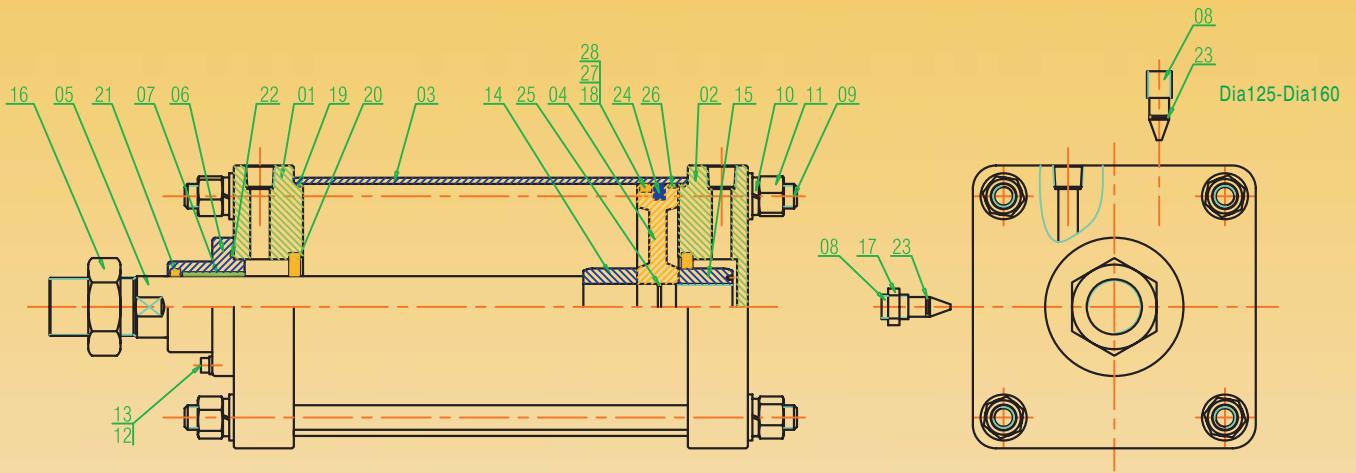
Note:

- 1: Reed Switch Option Only Available Up To 160mm Bore
- 2: *Refer To Non Standard PDF For Dimensions
- 3: For "W" Type Dimensions See "Specials" PDF's
- 4: For Any Options Not Listed Contact TANAIR

TAN AIR PNEUMATICS

TPCS1 J.I.S TYPE CYLINDER PARTS

INSIDE STRUCTURE DRAWINGS



Parts List

NO	Name	Material	Remarks
1	Rod Cover	AS4C	Dia125-Dia160
		FCD	Dia180-Dia200
		Ss41	Dia250-Dia300
2	Head Cover	AS4C	Dia125-Dia160
		Ss41	Dia180-Dia300
3	Tube	A6063	Dia125-Dia160
		STKM13C	Dia180-Dia300
4	Piston	AC4C	Dia125-Dia160
		Ss41	Dia180-Dia300
5	Rod	S45C	
6	Sub Block	Fc20	
7	Bush	DU	
8	Cushion Niddle	BSBM	
9	Tie Rod	Ss41	
10	Spring Washer	SCM4	
11	Tie Rod Nut	S20C	
12	Sub Block Bolt	SCM4	
13	Washer	SCM4	
14	Cushion Ring(1)	Ss41	
15	Cushion Ring(2)	Ss41	
16	Rod Nut	Ss41	
17	Cushion Nut	S20C	

Packing List

NO	Name	Material	ID(mm)							
			125	140	150	160	180	200	250	300
NON LUBE TYPE(STANDARD)										
	Piston Packing	N	Ap115	Ap130	Ap140	Ap150	Ap165	Ap185	Ap235	Ap285
19	Tube O Ring		Dia125+ S125	Dia140+ S140	Dia150+ S150	Dia160+ S160	Dia180+ S180	Dia200+ S200	Dia250+ S250	Dia300+ S300
20	Cushion Packing	B	PCS50	PCS50	PCS55	PCS55	PCS60	PCS60	PCS75	PCS80
21	Rod Packing		DRP35	DRP35	DRP40	DRP40	DRP45	DRP50	DRP60	DRP70
22	Bush O Ring	R	Ap56	Ap56	Ap58	Ap58	Ap63	Ap67	Ap80	Ap85
23	Niddle O Ring		P9	P9	P9	P9	P9	P9	P9	P9
24	Magnet		Dia125	Dia140	Dia150	Dia160	-	-	-	-
25	Rod O Ring		S26	S26	S30	S30	S35	S40	S48	S50
NON LUBE TYPE(STANDARD)										
26	Wearing	AC	SBW125	SBW140	SBW150	SBW160	SBW180	SBW200	SBW250	SBW300
27	Piston Packing	NBR	PSD125	PSD140	PSD150	PSD160	PSD180	PSD200	PSD250	PSD300
LOW HYDRAULIC TYPE										
28	Piston Packing	NBR	DXP125	DXP140	DXP150	DXP160				

TAN AIR PNEUMATICS

TPCS1 J.I.S TYPE CYLINDER PARTS

SPECIFICATION		
TYPE	OILESS TYPE	LOW-HYDRAULIC TYPE
Fluid	Air	Hydraulic Working Oil
Bearing Pressure	16kgf/cm2	
Max.Working Pressure	9.9kgf/cm2	
Min.Working Pressure	0.8kgf/cm2	1kgf/cm2
Working Piston Speed	50-500mm/s	0.5-200mm/s
Cushion	Cushion	None
Ambient&Working Temp	5°C-60°C	
Screw Tolerance	Ks2 2nd KS level	
Allowance Of stroke length	~250 ^{+1.0} ₀	250~1000 ^{+1.4} ₀
Support type of fitting surface	Basic type, Foot type, Rod-side flange type, Head-side flange type Single thread Clevis type, Double thread Clevis type, Trunion type	

PARTS								
Support type of fitting surface		Basic Type	Foot Type	Rod-side Flange Type	Head-side Flange Type	Single Thread Clevis Type	Double Thread Clevis Type	Center-side Trunion Type
Basic Mounted-Parts	Pin For Clevis	—	—	—	—	—	•	—
	Rod-End Nut	•	•	•	•	•	•	•
Special Order	Single knuckle joint	•	•	•	•	•	•	•
	Double knuckle joint	•	•	•	•	•	•	•
	Bellows	•	•	•	•	•	•	•

STANDARD STROKE TABLE		
ID(mm)	Standard Stroke	Max Stroke Range
125	50,100,150,200,250,300	1000
140	50,100,150,200,250,300	1000
150	50,100,150,200,250,300	1000
160	50,100,150,200,250,300	1200
180	50,100,150,200,250,300	1400
200	50,100,150,200,250,300	1600
250	50,100,150,200,250,300,400	1800
300	50,100,150,200,250,300,400	2000

WORKING TEMP OF BELOWS MATERIALS		
Notation	Material	Max Ambient Temp
J	Nylon Tauplin	60°C
K	Neoprene Cross	110°C

TYPE				
TYPE		Working	Packing	ID(mm)
TPCS1	Oil supply	Double acting	O ring	Ø125,Ø140,Ø150,Ø160 Ø180,Ø200,Ø250,Ø300
TPCS1H	No oil supply	Double acting	Special	
TPCS1H	Low hydraulic	Double acting	Special	Ø125,Ø140,Ø150,Ø160

SUPPORTING PARTS NUMBER									
Lot-End	ID(mm)	125	140	150	160	180	200	250	300
	FOOT TYPE	TPCS1-L-125	TPCS1-L-140	TPCS1-L-150	TPCS1-L-160	TPCS1-L-180	TPCS1-L-200	TPCS1-L-250	TPCS1-L-300
	FLANGE TYPE	TPCS1-F-125	TPCS1-F-140	TPCS1-F-150	TPCS1-F-160	TPCS1-F-180	TPCS1-F-200	TPCS1-F-250	TPCS1-F-300
	THREAD CLEVIS	TPCS1-C-125	TPCS1-C-140	TPCS1-C-150	TPCS1-C-160	TPCS1-C-180	TPCS1-C-200	TPCS1-C-250	TPCS1-C-300
	2 THREAD CLEVIS	TPCS1-D-125	TPCS1-D-140	TPCS1-D-150	TPCS1-D-160	TPCS1-D-180	TPCS1-D-200	TPCS1-D-250	TPCS1-D-300

LOT-END NUMBER									
Lot-End	ID(mm)	125	140	150	160	180	200	250	300
	THREAD CLEVIS	TPCS1-125I	TPCS1-140I	TPCS1-150I	TPCS1-160I	TPCS1-180I	TPCS1-200I	TPCS1-250I	TPCS1-300I
	2 THREAD CLEVIS	TPCS1-125Y	TPCS1-140Y	TPCS1-150Y	TPCS1-160Y	TPCS1-180Y	TPCS1-200Y	TPCS1-250Y	TPCS1-300Y